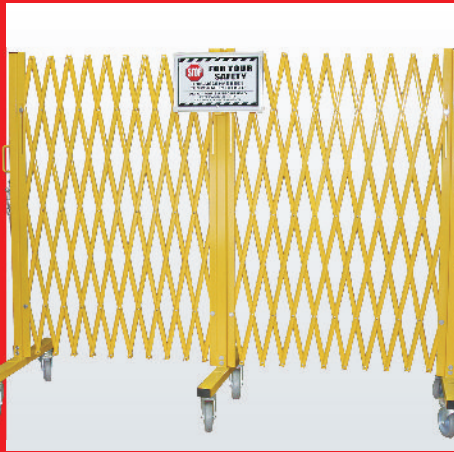


**2014-2015**

**STORAGE AND SAFETY EQUIPMNET**  
**For Your Warehouse / Supermarket / Plant / Office**



# BOLTLESS SHELVING

Super strong roll formed 14 Ga steel upright allows shelves to be adjusted at 1 1/2" increments. All model have single, double or extra double rivet beams for choice, finish in power coating.



### Angle Post

Model	Thickness	L'
BN610001	14Ga	2.5
BN610002	14Ga	3
BN610003	14Ga	4
BN610004	14Ga	5
BN610005	14Ga	6
BN610006	14Ga	7
BN610007	14Ga	8
BN610008	14Ga	9
BN610009	14Ga	10
BN610010	14Ga	12
BN610011	14Ga	13



### Heavy Duty Rivet Beams (300lbs per Shelf)

Model	Thickness	L"
BN610033	14Ga	12
BN610034	14Ga	15
BN610035	14Ga	18
BN610036	14Ga	24
BN610037	14Ga	36
BN610038	14Ga	42
BN610039	14Ga	48



### Extra Heavy Duty Double Rivet Beams (600-1000lbs per Shelf)

Model	Thickness	L"
BN610040	16Ga	12
BN610041	16Ga	15
BN610042	16Ga	18
BN610043	16Ga	24
BN610044	16Ga	30
BN610045	14Ga	36
BN610046	14Ga	42
BN610047	14Ga	48
BN610048	14Ga	60
BN610049	14Ga	69
BN610050	14Ga	72
BN610051	14Ga	96



### Heavy Angle Post

Model	Thickness	L'
BN610012	14Ga	7
BN610013	14Ga	8
BN610014	14Ga	10
BN610015	14Ga	12
BN610016	14Ga	14
BN610017	14Ga	18



### Flower Post

Model	Thickness	L'
BN610018	14Ga	6
BN610019	14Ga	6.5
BN610020	14Ga	7
BN610021	14Ga	8
BN610022	14Ga	10
BN610023	14Ga	12



### Extra Heavy Duty Double Rivet Channel Beam (1000-1500lbs per Shelf)

Model	Thickness	L"
BN610052	14Ga	48
BN610053	14Ga	72
BN610054	14Ga	96
BN610055	11Ga	72
BN610056	11Ga	96



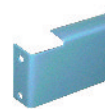
### Tee Post

Model	Thickness	L'
BN610024	14Ga	3
BN610025	14Ga	4
BN610026	14Ga	5
BN610027	14Ga	6
BN610028	14Ga	7
BN610029	14Ga	8
BN610030	14Ga	9
BN610031	14Ga	10
BN610032	14Ga	12



### Shelf Deck Support

Model	Thickness	L"
BN610057	16Ga	12
BN610058	16Ga	15
BN610059	16Ga	18
BN610060	16Ga	24
BN610061	16Ga	30
BN610062	16Ga	36
BN610063	16Ga	48



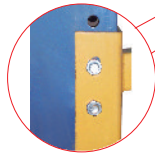
W" x D"	Model			W" x D"	Model		
	Wood Deck	Wire Deck	Steel Deck		Wood Deck	Wire Deck	Steel Deck
36x12	BN610064	BN610075	BN610086	60X24	BN610097	BN610108	BN610119
36x18	BN610065	BN610076	BN610087	60X36	BN610098	BN610109	BN610120
36x24	BN610066	BN610077	BN610088	60X48	BN610099	BN610110	BN610121
42x15	BN610067	BN610078	BN610089	72X15	BN610100	BN610111	BN610122
42X30	BN610068	BN610079	BN610090	72X24	BN610101	BN610112	BN610123
48x12	BN610069	BN610080	BN610091	72X30	BN610102	BN610113	BN610124
48x18	BN610070	BN610081	BN610092	72X36	BN610103	BN610114	BN610125
48x24	BN610071	BN610082	BN610093	72X48	BN610104	BN610115	BN610126
48x36	BN610072	BN610083	BN610094	96X24	BN610105	BN610116	BN610127
48X48	BN610073	BN610084	BN610095	96X36	BN610106	BN610117	BN610128
60x18	BN610074	BN610085	BN610096	96X48	BN610107	BN610118	BN610129



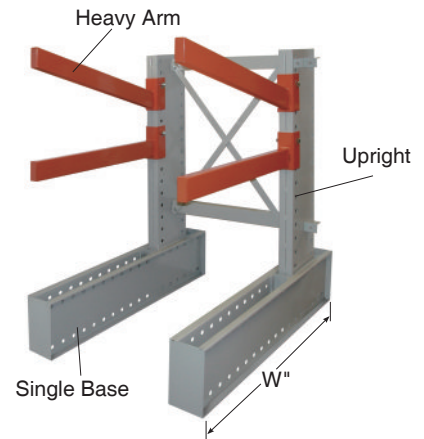
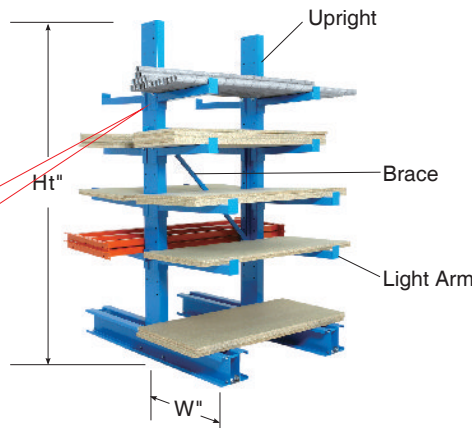
Wood Deck      Steel Deck      Wire Deck

# CANTILEVER RACK

Store long products with ease. Unobstructed arms afford easy accessibility with no uprights on the aisle to restrict storage. Choose straight arms for storing flat items, inclined arms for items that roll, such as pipes. Arms adjust easily on 3" centers. "Pin keeper" device prevents arms from being dislocated during loading and unloading. Easy assembly, no special tools required. Gray enamel finish.



**Pin Keeper**



## Upright

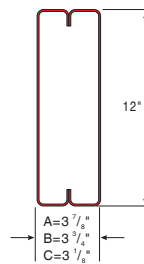
Ht"	Thickness	Model		
		A" X 12"	B" X 12"	C" X 12"
96	12Ga	BN620001	BN620005	BN620009
120	12Ga	BN620002	BN620006	BN620010
144	12Ga	BN620003	BN620007	BN620011
192	12Ga	BN620004	BN620008	BN620012

## Single Base

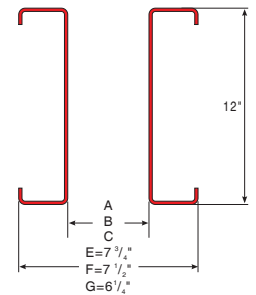
W"	Thickness	Model		
		E" X 12"	F" X 12"	G" X 12"
24	12Ga	BN620013	BN620019	BN620025
30	12Ga	BN620014	BN620020	BN620026
36	12Ga	BN620015	BN620021	BN620027
42	12Ga	BN620016	BN620022	BN620028
48	12Ga	BN620017	BN620023	BN620029
60	12Ga	BN620018	BN620024	BN620030

## Double Base

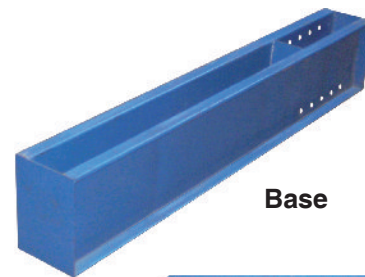
W"	Thickness	Model		
		E" X 12"	F" X 12"	G" X 12"
24"	12Ga	BN620031	BN620037	BN620043
30"	12Ga	BN620032	BN620038	BN620044
36"	12Ga	BN620033	BN620039	BN620045
42"	12Ga	BN620034	BN620040	BN620046
48"	12Ga	BN620035	BN620041	BN620047
60"	12Ga	BN620036	BN620042	BN620048



**Section of Upright**



**Section of Base**



**Base**

## Brace

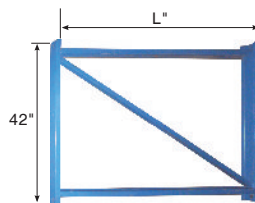
L"	Thickness	Model
36	14Ga	BN620060
48	14Ga	BN620061
60	14Ga	BN620062
72	14Ga	BN620063
96	14Ga	BN620064
144	14Ga	BN620065



## Heavy Arm with Lips

W"	Thickness	Model	Capacity lbs
30	14Ga	BN620049	5000
36	14Ga	BN620050	4100
42	14Ga	BN620051	3600
48	14Ga	BN620052	3300
60	14Ga	BN620053	2800

For inclined arms suffix S



## Brace Kit

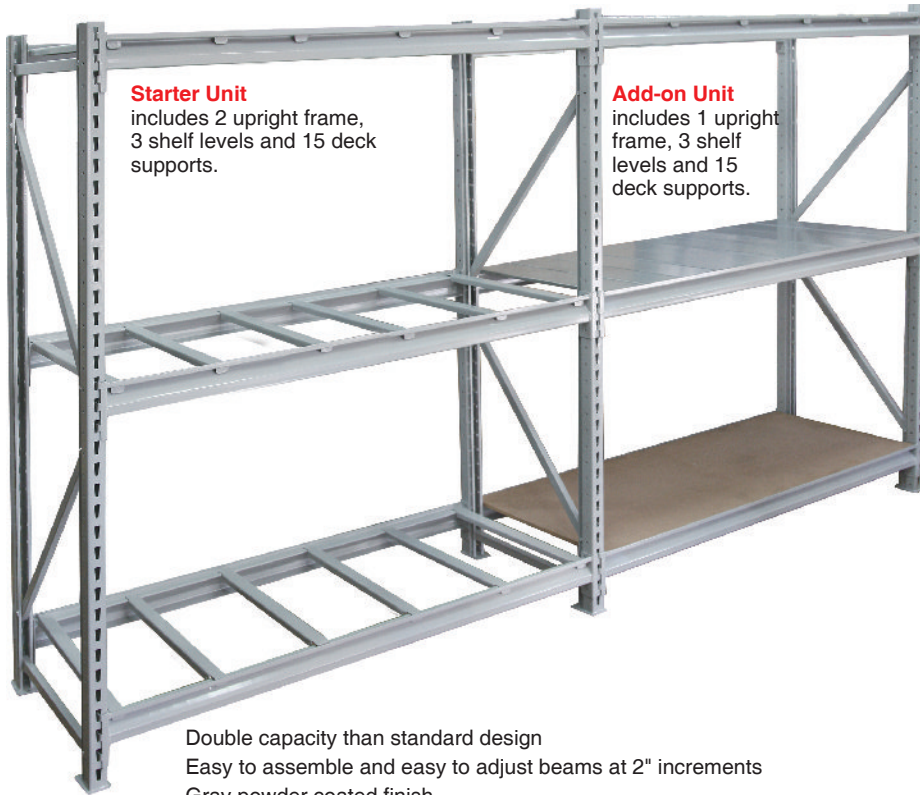
L"	Thickness	Model
36	14Ga	BN620054
48	14Ga	BN620055
60	14Ga	BN620056
72	14Ga	BN620057
96	14Ga	BN620058
144	14Ga	BN620059



## Light Arm with Lips

W"	Thickness	Model	Capacity lbs
30	14Ga	BN620060	3000
36	14Ga	BN620061	2100
42	14Ga	BN620062	1500
48	14Ga	BN620063	1000

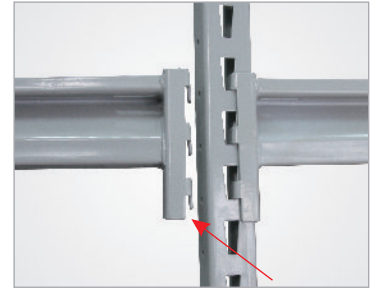
For inclined arms suffix S



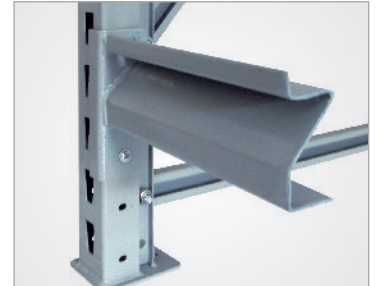
**Starter Unit**  
includes 2 upright frame,  
3 shelf levels and 15 deck  
supports.

**Add-on Unit**  
includes 1 upright frame,  
3 shelf levels and 15  
deck supports.

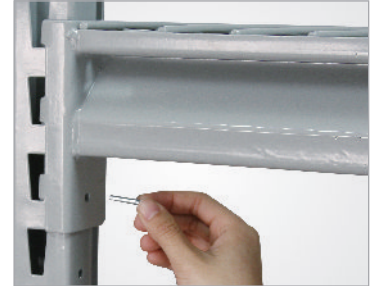
- Double capacity than standard design
- Easy to assemble and easy to adjust beams at 2" increments
- Gray powder coated finish
- Choose the Decking that suits your needs: No Deck, Wood, Wire or Steel
- Wood Deck** - Low cost, precut <sup>5</sup>/<sub>8</sub>" thick MDF
- Wire Deck** - Allows visibility and light, air and sprinkler penetration  
Galvanized finish or power coated.
- Steel Deck** - Long lasting, smooth galvanized finish.



**Three Hooks for Positive Connection**



**Z-beam for Greater Capacity**



**Safety Pin Locks Beams in Place**

W" x D" x H"	Cap. lbs/ Level	No Deck		Wood Desk		Wire Desk		Steel Desk	
		Starter Model	Add-on Model	Starter Model	Add-on Model	Starter Model	Add-on Model	Starter Model	Add-on Model
60 x 18 x 72	3800	BN630001	BN630031	BN630061	BN630091	BN630121	BN630151	BN630181	BN630211
60 x 24 x 72	3800	BN630002	BN630032	BN630062	BN630092	BN630122	BN630152	BN630182	BN630212
60 x 36 x 72	3800	BN630003	BN630033	BN630063	BN630093	BN630123	BN630153	BN630183	BN630213
60 x 48 x 72	3800	BN630004	BN630034	BN630064	BN630094	BN630124	BN630154	BN630184	BN630214
72 x 18 x 72	2750	BN630005	BN630035	BN630065	BN630095	BN630125	BN630155	BN630185	BN630215
72 x 24 x 72	2750	BN630006	BN630036	BN630066	BN630096	BN630126	BN630156	BN630186	BN630216
72 x 36 x 72	2750	BN630007	BN630037	BN630067	BN630097	BN630127	BN630157	BN630187	BN630217
72 x 48 x 72	2750	BN630008	BN630038	BN630068	BN630098	BN630128	BN630158	BN630188	BN630218
96 x 18 x 72	2150	BN630009	BN630039	BN630069	BN630099	BN630129	BN630159	BN630189	BN630219
96 x 24 x 72	2150	BN630010	BN630040	BN630070	BN630100	BN630130	BN630160	BN630190	BN630220
96 x 36 x 72	2150	BN630011	BN630041	BN630071	BN630101	BN630131	BN630161	BN630191	BN630221
96 x 48 x 72	2150	BN630012	BN630042	BN630072	BN630102	BN630132	BN630162	BN630192	BN630222
60 x 24 x 96	3800	BN630013	BN630043	BN630073	BN630103	BN630133	BN630163	BN630193	BN630223
60 x 36 x 96	3800	BN630014	BN630044	BN630074	BN630104	BN630134	BN630164	BN630194	BN630224
60 x 48 x 96	3800	BN630015	BN630045	BN630075	BN630105	BN630135	BN630165	BN630195	BN630225
72 x 24 x 96	2750	BN630016	BN630046	BN630076	BN630106	BN630136	BN630166	BN630196	BN630226
72 x 36 x 96	2750	BN630017	BN630047	BN630077	BN630107	BN630137	BN630167	BN630197	BN630227
72 x 48 x 96	2750	BN630018	BN630048	BN630078	BN630108	BN630138	BN630168	BN630198	BN630228
96 x 24 x 96	2150	BN630019	BN630049	BN630079	BN630109	BN630139	BN630169	BN630199	BN630229
96 x 36 x 96	2150	BN630020	BN630050	BN630080	BN630110	BN630140	BN630170	BN630200	BN630230
96 x 48 x 96	2150	BN630021	BN630051	BN630081	BN630111	BN630141	BN630171	BN630201	BN630231
60 x 24 x 120	3800	BN630022	BN630052	BN630082	BN630112	BN630142	BN630172	BN630202	BN630232
60 x 36 x 120	3800	BN630023	BN630053	BN630083	BN630113	BN630143	BN630173	BN630203	BN630233
60 x 48 x 120	3800	BN630024	BN630054	BN630084	BN630114	BN630144	BN630174	BN630204	BN630234
72 x 24 x 120	2750	BN630025	BN630055	BN630085	BN630115	BN630145	BN630175	BN630205	BN630235
72 x 36 x 120	2750	BN630026	BN630056	BN630086	BN630116	BN630146	BN630176	BN630206	BN630236
72 x 48 x 120	2750	BN630027	BN630057	BN630087	BN630117	BN630147	BN630177	BN630207	BN630237
96 x 24 x 120	2150	BN630028	BN630058	BN630088	BN630118	BN630148	BN630178	BN630208	BN630238
96 x 36 x 120	2150	BN630029	BN630059	BN630089	BN630119	BN630149	BN630179	BN630209	BN630239
96 x 48 x 120	2150	BN630030	BN630060	BN630090	BN630120	BN630150	BN630180	BN630210	BN630240

# EXTRA HIGH CAPACITY BULK RACK

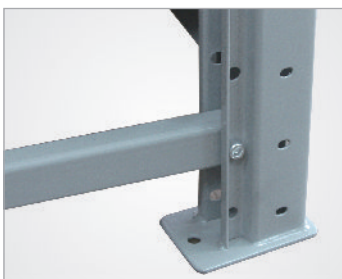
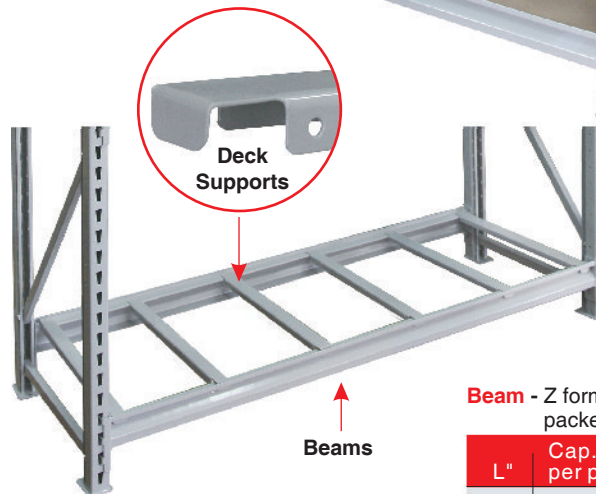
*Best Value on the Market - 3800 lbs. Per Shelf*



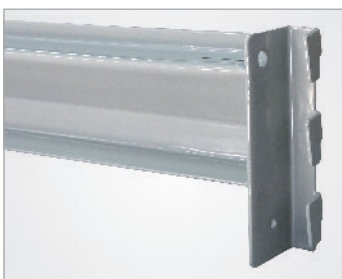
Wood Deck	W" x D"	Model
	60x18	BN630501
	60x24	BN630502
	60x36	BN630503
	60x48	BN630504
	72x18	BN630505
	72x24	BN630506
	72x36	BN630507
	72x48	BN630508
	96x18	BN630509
	96x24	BN630510
	96x36	BN630511
	96x48	BN630512

Wire Deck	W" x D"	Model
	60x18	BN630513
	60x24	BN630514
	60x36	BN630515
	60x48	BN630516
	72x18	BN630517
	72x24	BN630518
	72x36	BN630519
	72x48	BN630520
	96x18	BN630521
	96x24	BN630522
	96x36	BN630523
	96x48	BN630524

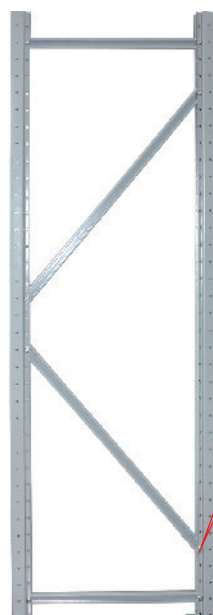
Steel Deck	W" x D"	Model
	12x24	BN630525
	12x36	BN630526
	12x48	BN630527
	Packed by 3	



Foot plates allow rack to bolted to the floor.



Formed step beam creates extra support for increased capacity.



Upright



Oval head nut for easy assemble

Upright - 14 Ga packed by frame

W" x D"	Model
72x18	BN630528
72x24	BN630529
72x36	BN630530
72x48	BN630531
96x24	BN630532
96x36	BN630533
96x48	BN630534
120x24	BN630535
120x36	BN630536
120x48	BN630537

Beam - Z formed 12 Ga packed by pair

L"	Cap. lbs. per pair	Model
60	3800	BN630538
72	2750	BN630539
96	2150	BN630540

Deck Support - For wood and wire decks. Use 5 per level. Packed by 3.

L"	Model
24	BN630541
36	BN630542
48	BN630543



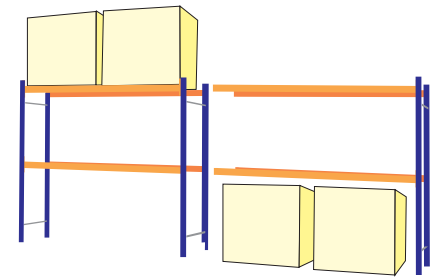
BN630544

5"x1/4" Non-marring Polyurethane Can only be added to 18"x72"H units for mobility. 1000lb. capacity

# LONG SPAN SHELVING



- Attractive retail merchandising & efficient warehouse storage.
- Unique frame that require no hardware for assembly.



**Starter Unit**  
Two upright frames and two pairs of beams.

**Add-on Unit**  
One upright frame and two pairs of beams.

Size L×W×H(mm)	No Deck		Wood Deck		Wire Deck		Steel Deck	
	Model	Add-on	Model	Add-on	Model	Add-on	Model	Add-on
900×450×1350	BN7060001	BN7060002	BN7060003	BN7060004	BN7060005	BN7060006	BN7060007	BN7060008
900×600×1350	BN7060009	BN7060010	BN7060011	BN7060012	BN7060013	BN7060014	BN7060015	BN7060016
1200×450×1350	BN7060017	BN7060018	BN7060019	BN7060020	BN7060021	BN7060022	BN7060023	BN7060024
1200×600×1350	BN7060025	BN7060026	BN7060027	BN7060028	BN7060029	BN7060030	BN7060031	BN7060032
1500×450×1350	BN7060033	BN7060034	BN7060035	BN7060036	BN7060037	BN7060038	BN7060039	BN7060040
1500×600×1350	BN7060041	BN7060042	BN7060043	BN7060044	BN7060045	BN7060046	BN7060047	BN7060048
1800×450×1350	BN7060049	BN7060050	BN7060051	BN7060052	BN7060053	BN7060054	BN7060055	BN7060056
1800×600×1350	BN7060057	BN7060058	BN7060059	BN7060060	BN7060061	BN7060062	BN7060063	BN7060064
900×450×2100	BN7060065	BN7060066	BN7060067	BN7060068	BN7060069	BN7060070	BN7060071	BN7060072
900×600×2100	BN7060073	BN7060074	BN7060075	BN7060076	BN7060077	BN7060078	BN7060079	BN7060080
1200×450×2100	BN7060081	BN7060082	BN7060083	BN7060084	BN7060085	BN7060086	BN7060087	BN7060088
1200×600×2100	BN7060089	BN7060090	BN7060091	BN7060092	BN7060093	BN7060094	BN7060095	BN7060096
1500×450×2100	BN7060097	BN7060098	BN7060099	BN7060100	BN7060101	BN7060102	BN7060103	BN7060104
1500×600×2100	BN7060105	BN7060106	BN7060107	BN7060108	BN7060109	BN7060110	BN7060111	BN7060112
1800×450×2100	BN7060113	BN7060114	BN7060115	BN7060116	BN7060117	BN7060118	BN7060119	BN7060120
1800×600×2100	BN7060121	BN7060122	BN7060123	BN7060124	BN7060125	BN7060126	BN7060127	BN7060128
900×450×2400	BN7060129	BN7060130	BN7060131	BN7060132	BN7060133	BN7060134	BN7060135	BN7060136
900×600×2400	BN7060137	BN7060138	BN7060139	BN7060140	BN7060141	BN7060142	BN7060143	BN7060144
1200×450×2400	BN7060145	BN7060146	BN7060147	BN7060148	BN7060149	BN7060150	BN7060151	BN7060152
1200×600×2400	BN7060153	BN7060154	BN7060155	BN7060156	BN7060157	BN7060158	BN7060159	BN7060160
1500×450×2400	BN7060161	BN7060162	BN7060163	BN7060164	BN7060165	BN7060166	BN7060167	BN7060168
1500×600×2400	BN7060169	BN7060170	BN7060171	BN7060172	BN7060173	BN7060174	BN7060175	BN7060176
1800×450×2400	BN7060177	BN7060178	BN7060179	BN7060180	BN7060181	BN7060182	BN7060183	BN7060184
1800×600×2400	BN7060185	BN7060186	BN7060187	BN7060188	BN7060189	BN7060190	BN7060191	BN7060192

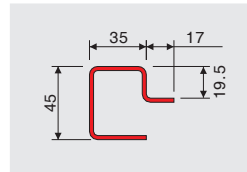
# LONG SPAN SHELVING

Wood Deck	Model	Size L×W(mm)
	BN7061101	900×450
	BN7061102	900×600
	BN7061103	1200×450
	BN7061104	1200×600
	BN7061105	1500×450
	BN7061106	1500×600
	BN7061107	1800×450
	BN7061108	1800×600

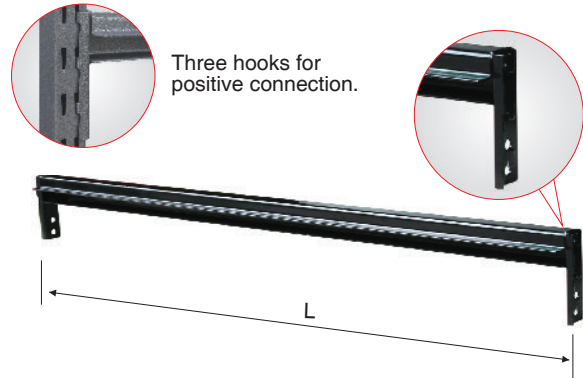
Wire Deck	Model	Size L×W(mm)
	BN7061201	900×450
	BN7061202	900×600
	BN7061203	1200×450
	BN7061204	1200×600
	BN7061205	1500×450
	BN7061206	1500×600

Steel Deck	Model	Size L×W(mm)
	BN7061301	900×450
	BN7061302	900×600
	BN7061303	1200×450
	BN7061304	1200×600
	BN7061305	1500×450
	BN7061306	1500×600

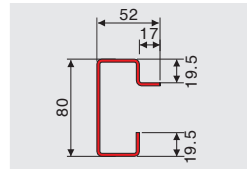
## Light Beam Capacity of 200-500kg



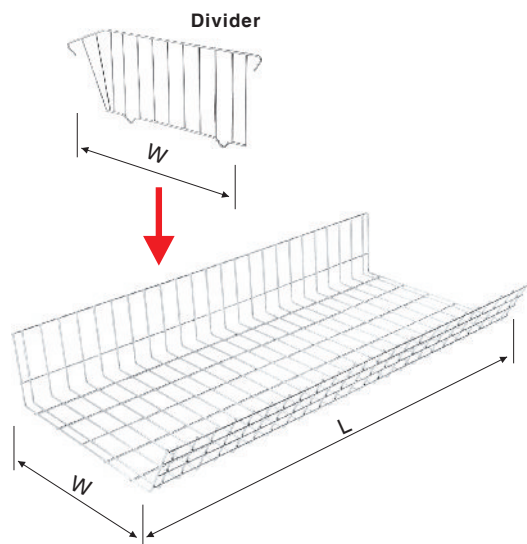
Model	Size L(mm)
BN7061401	1800
BN7061402	1500
BN7061403	1200
BN7061404	900



## Heavy Beam Capacity of 500-1000kg



Model	Size L(mm)
BN7061501	1800
BN7061502	1500
BN7061503	1200
BN7061504	900



## Wire Basket

Model	Size L×W(mm)
BN7061601	1200×600
BN7061602	1200×450
BN7061603	900×600
BN7061604	900×450

## Divider

Model	Size W(mm)
BN7061701	600
BN7061702	450



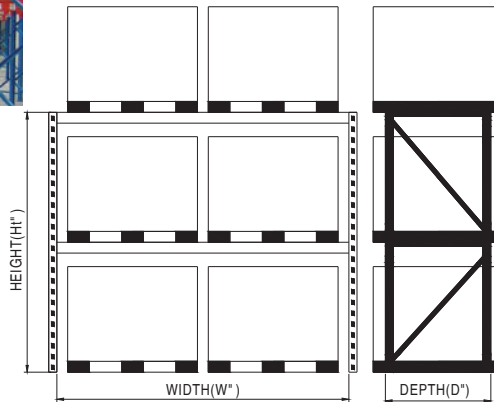
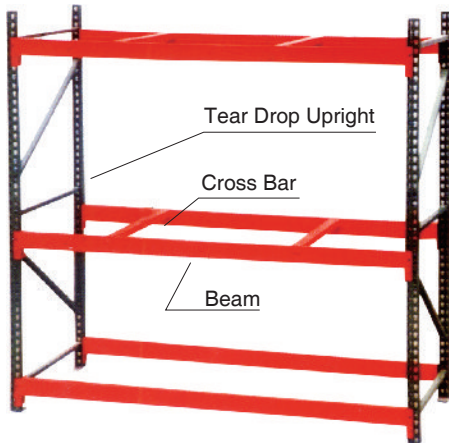
## Upright Frame

Model	Size W×H(mm)
BN7061801	600×2400
BN7061802	450×2400
BN7061803	600×2100
BN7061804	450×2100
BN7061805	600×1350
BN7061806	450×1350

# TEARDROP PALLET RACK



Easy and quick assembly for all your pallet storage needs, tool free tear drop, snap-in locking slots ensure a secure and stable unit. Durable heavy 14 gauge steel one piece box-formed reinforced upright frame punched 2" on centers for maximum adjustability and 14 & 16 gauge beams for years of service. Positive six-way locking action: right to left, front to back, up /down. Lock automatically snaps into place and secures beam, is visible for easy checking and fast adjustment. Welded braces provide maximum rigidity and stability. Epoxy finish. Step down beam design accommodates cross bars and decking.



## Row Spacer for Pallet Rack Added Stability

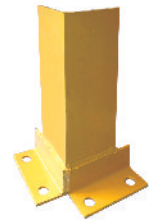


Model	Thickness	L"
BN640061	14Ga	8
BN640062	14Ga	12

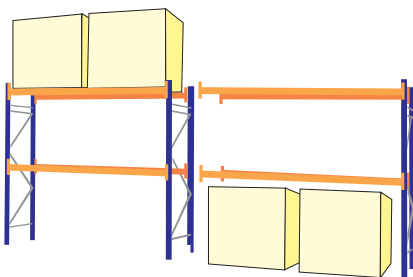
## Teardrop Pallet Rack

W" x D"	Beam Ht"	Cap. lbs. per pair	Starter Model	Add-on Model
<b>8' HIGH</b>				
48x36	3 1/2	6590	BN640001	BN640016
96x36	4	5030	BN640002	BN640017
96x36	5	7160	BN640003	BN640018
108x36	5	6420	BN640004	BN640019
120x36	5	5630	BN640005	BN640020
48x42	3 1/2	6590	BN640006	BN640021
96x42	4	5030	BN640007	BN640022
96x42	5	7160	BN640008	BN640023
108x42	5	6420	BN640009	BN640024
120x42	5	5630	BN640010	BN640025
48x48	3 1/2	6590	BN640011	BN640026
96x48	4	5030	BN640012	BN640027
96x48	5	7160	BN640013	BN640028
108x48	5	6420	BN640014	BN640029
120x48	5	5630	BN640015	BN640030
<b>10' HIGH</b>				
48x42	3 1/2	6590	BN640031	BN640041
96x42	4	5030	BN640032	BN640042
96x42	5	7160	BN640033	BN640043
108x42	5	6420	BN640034	BN640044
120x42	5	5630	BN640035	BN640045
48x48	3 1/2	6590	BN640036	BN640046
96x48	4	5030	BN640037	BN640047
96x48	5	7160	BN640038	BN640048
108x48	5	6420	BN640039	BN640049
120x48	5	5630	BN640040	BN640050
<b>12' HIGH</b>				
48x42	3 1/2	6590	BN640051	BN640056
96x42	4	5030	BN640052	BN640057
96x42	5	7160	BN640053	BN640058
108x42	5	6420	BN640054	BN640059
120x42	5	5630	BN640055	BN640060

## Frame Guard

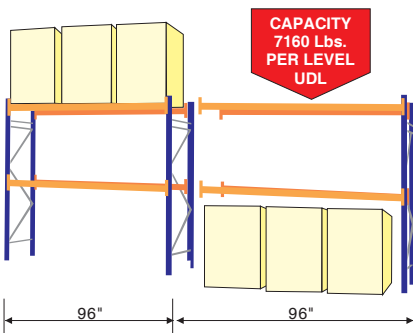


Model	Thickness	L"
BN640063	12Ga	12
BN640064	12Ga	24



**Starter Unit**  
Two upright frames and two pairs of beams.

**Add-on Unit**  
One upright frame and two pairs of beams.

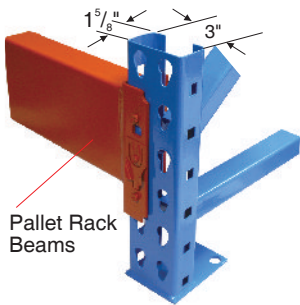


## Cross Bar

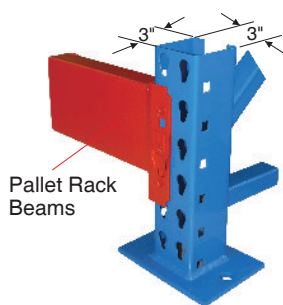


Model	Thickness	L"
BN640065	14Ga	36
BN640066	14Ga	42
BN640067	14Ga	48

# TEAR DROP PALLET RACK



Pallet Rack Beams



Pallet Rack Beams

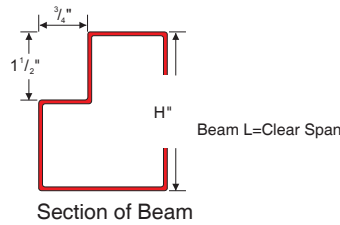


## Tear Drop Upright 3"x1 5/8"

H" x D"	Model
96x36	BN640068
96x42	BN640069
96x48	BN640070
120x36	BN640071
120x42	BN640072
120x48	BN640073
144x36	BN640074
144x42	BN640075
144x48	BN640076
168x36	BN640077
168x42	BN640078
168x48	BN640079
192x36	BN640080
192x42	BN640081
192x48	BN640082
216x36	BN640083
216x42	BN640084
216x48	BN640085
240x36	BN640086
240x42	BN640087
240x48	BN640088

## Tear Drop Upright 3"x3"

H" x D"	Model
96x36	BN640089
96x42	BN640090
96x48	BN640091
120x36	BN640092
120x42	BN640093
120x48	BN640094
144x36	BN640095
144x42	BN640096
144x48	BN640097
168x36	BN640098
168x42	BN640099
168x48	BN640100
192x36	BN640101
192x42	BN640102
192x48	BN640103
216x36	BN640104
216x42	BN640105
216x48	BN640106
240x36	BN640107
240x42	BN640108
240x48	BN640109



End Clip, Interchangeable for both New and Old Tear Drop Style



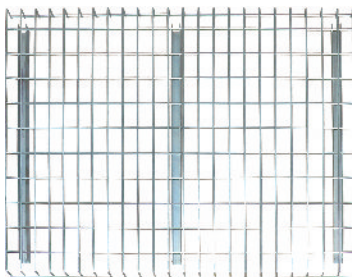
End Clip with Removable Safety Pins

## Beams

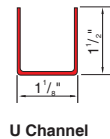
H" x L"	Cap. lbs. per pair	Model
3x48	6200	BN640110
3X96	3000	BN640111
3X108	2700	BN640112
3X120	2500	BN640113
3 1/2x48	6590	BN640114
3 1/2x96	4130	BN640115
3 1/2x108	3330	BN640116
3 1/2x120	2800	BN640117
4x96	5030	BN640118
4x108	4500	BN640119
4x120	4200	BN640120
4X144	3800	BN640121
4 1/2x96	6300	BN640122
4 1/2x108	5600	BN640123
4 1/2x120	5000	BN640124
4 1/2x144	4600	BN640125
5x96	6960	BN640126
5x108	6220	BN640127
5x120	5620	BN640128
5x144	5200	BN640129
5 1/2x96	6300	BN640130
5 1/2x108	5800	BN640131
5 1/2x120	5630	BN640132
5 1/2x144	5500	BN640133
6x96	6700	BN640134
6x108	6200	BN640135
6x120	6000	BN640136
6X144	5970	BN640137

## Wire Mesh Decking

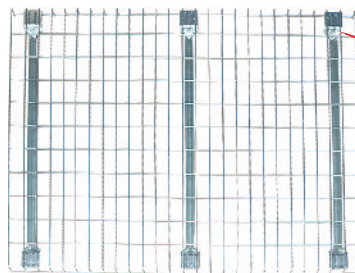
Strong open grid 4 gauge galvanized welded wire decking features welded construction and 14-gauge channel supports, permits light, air and sprinkler penetration, minimizes dust and debris accumulation. Easy installation—simply drop into place over beams. Use beams that have 1 1/2" or 1 5/8" step. 2000 lbs capacity. Galvanized and powder coating available.



Decking with U Channel



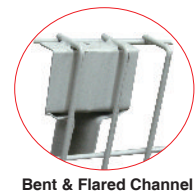
U Channel



Decking with V channel

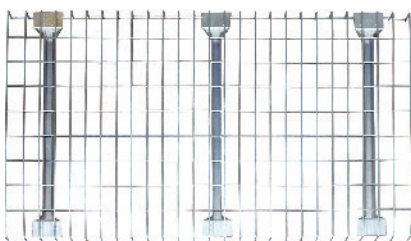


Flared Channel

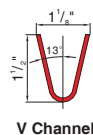


Bent & Flared Channel

Specify channel suffix: **U** channel (U)  
**V** channel (V)  
**Flared channel** (F)  
**Bent & flared channel** (BF)



Decking with Flared Channel



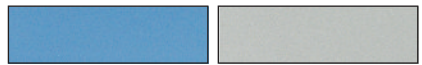
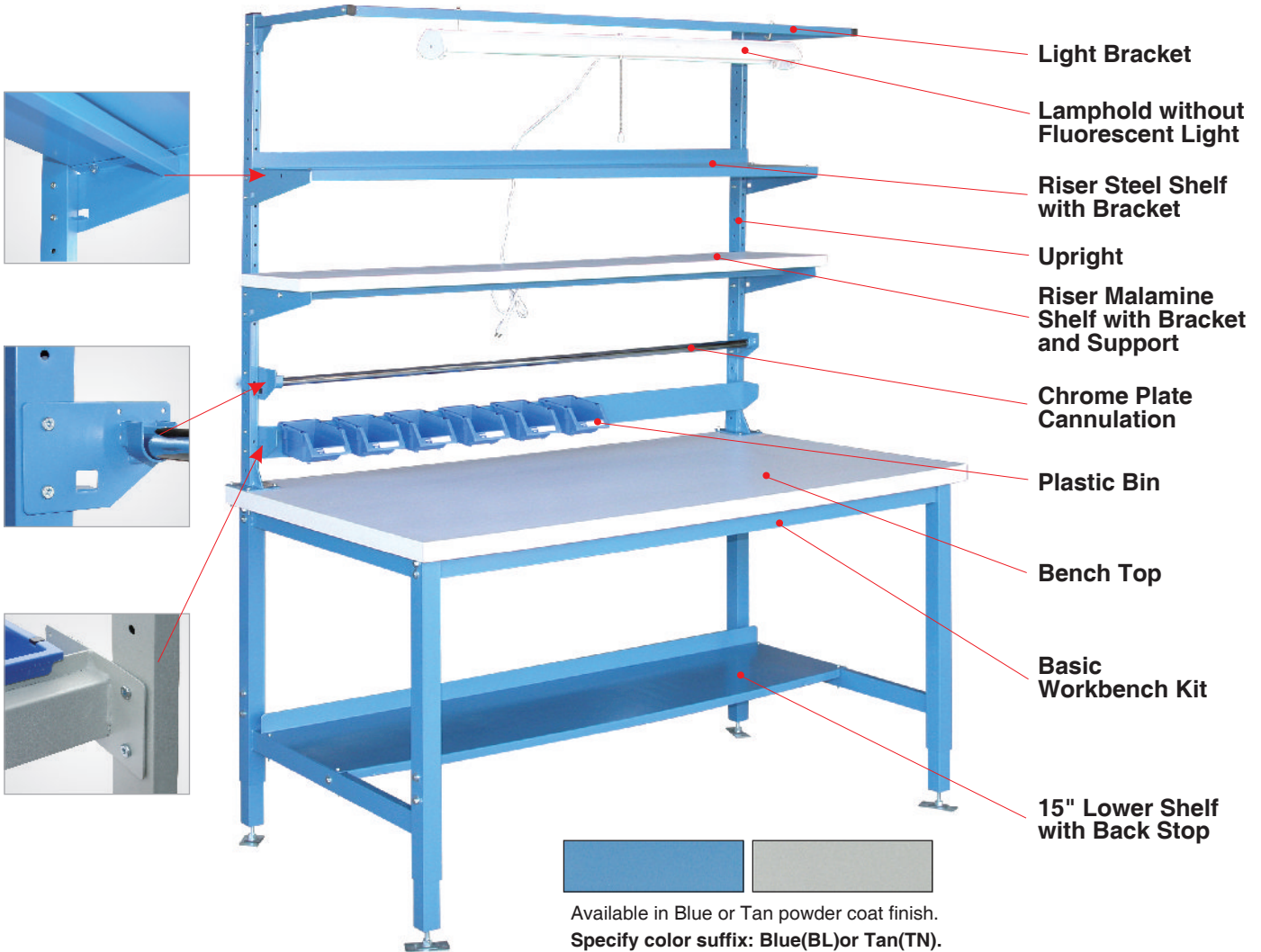
V Channel

W" x L"	Mesh	Model	W" x L"	Mesh	Model	W" x L"	Mesh	Model
24x36	2"x4"	BN640138	24x36	2.5"x4"	BN640153	24x36	2.5"x4.5"	BN640168
24x42	2"x4"	BN640139	24x42	2.5"x4"	BN640154	24x42	2.5"x4.5"	BN640169
24x48	2"x4"	BN640140	24x48	2.5"x4"	BN640155	24x48	2.5"x4.5"	BN640170
24x52	2"x4"	BN640141	24x52	2.5"x4"	BN640156	24x52	2.5"x4.5"	BN640171
36x36	2"x4"	BN640142	36x36	2.5"x4"	BN640157	36x36	2.5"x4.5"	BN640172
36x42	2"x4"	BN640143	36x42	2.5"x4"	BN640158	36x42	2.5"x4.5"	BN640173
36x48	2"x4"	BN640144	36x48	2.5"x4"	BN640159	36x48	2.5"x4.5"	BN640174
36x52	2"x4"	BN640145	36x52	2.5"x4"	BN640160	36x52	2.5"x4.5"	BN640175
42x36	2"x4"	BN640146	42x36	2.5"x4"	BN640161	42x36	2.5"x4.5"	BN640176
42x42	2"x4"	BN640147	42x42	2.5"x4"	BN640162	42x42	2.5"x4.5"	BN640177
42x48	2"x4"	BN640148	42x48	2.5"x4"	BN640163	42x48	2.5"x4.5"	BN640178
42x52	2"x4"	BN640149	42x52	2.5"x4"	BN640164	42x52	2.5"x4.5"	BN640179
48x36	2"x4"	BN640150	48x36	2.5"x4"	BN640165	48x36	2.5"x4.5"	BN640180
48x42	2"x4"	BN640151	48x42	2.5"x4"	BN640166	48x42	2.5"x4.5"	BN640181
48x48	2"x4"	BN640152	48x48	2.5"x4"	BN640167	48x48	2.5"x4.5"	BN640182
48x52	2"x4"	BN640153	48x52	2.5"x4"	BN640168	48x52	2.5"x4.5"	BN640183

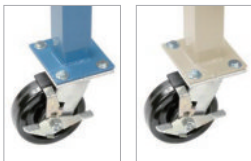
# HEAVY DUTY WORKBENCH

**Heavy Duty Workbenches** come standard with rugged 2" square, 14 gauge tubular steel legs height adjusted from 28" to 34" high on 2" increments. Capacity is 5,000 lb. Plastic, timber, stainless steel bench tops available in standard edge. Add stackable steel drawer with cylinder lock for convenient storage. Cabinet workbench is also a choice for safety storage. Powder coating finish for standard blue and tan, and any color available according to customers requirement. Quick and easy assembly.

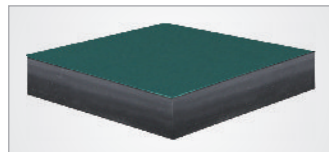
**Note: Riser shelf, light kit and bin rail require purchase of upright .**



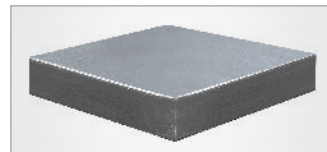
Available in Blue or Tan powder coat finish.  
Specify color suffix: Blue(BL)or Tan(TN).



Caster Leg



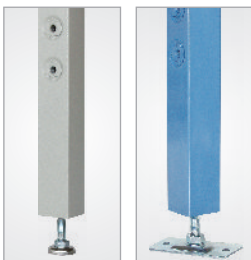
**Extra plastic**  
Superior anti-corrosion and shock absorption, Super strong and utility



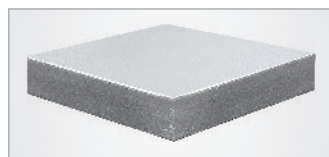
**Steel**  
Strong shock absorption, durable



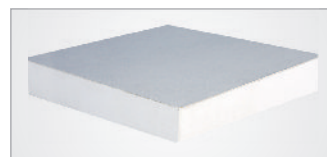
**Timber**  
Super shock absorption high capacity and finished with a penetrating oil protectant. Table vice can be used.



2 Adjustable Foot



**Stainless steel**  
Strong, neat, antirust and anti-corrosion, particle board core for durable.



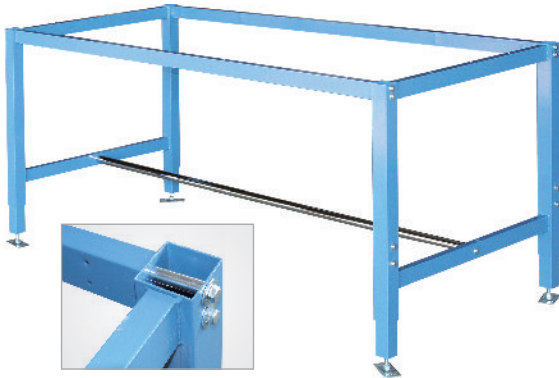
**Plastic**  
Economy and utility



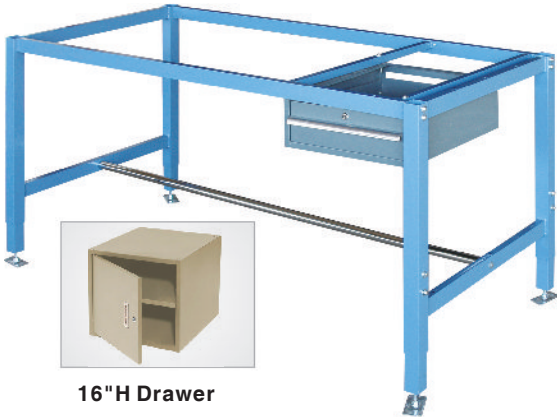
**Shop Top**  
Safety radius edge top and bottom, sealed with a catalyzed finish to resist liquids. Super strong MDF core.

# HEAVY DUTY WORKBENCH

## Basic Workbench Kit



## Drawer Workbench



16" H Drawer

## Cabinet Workbench Kit

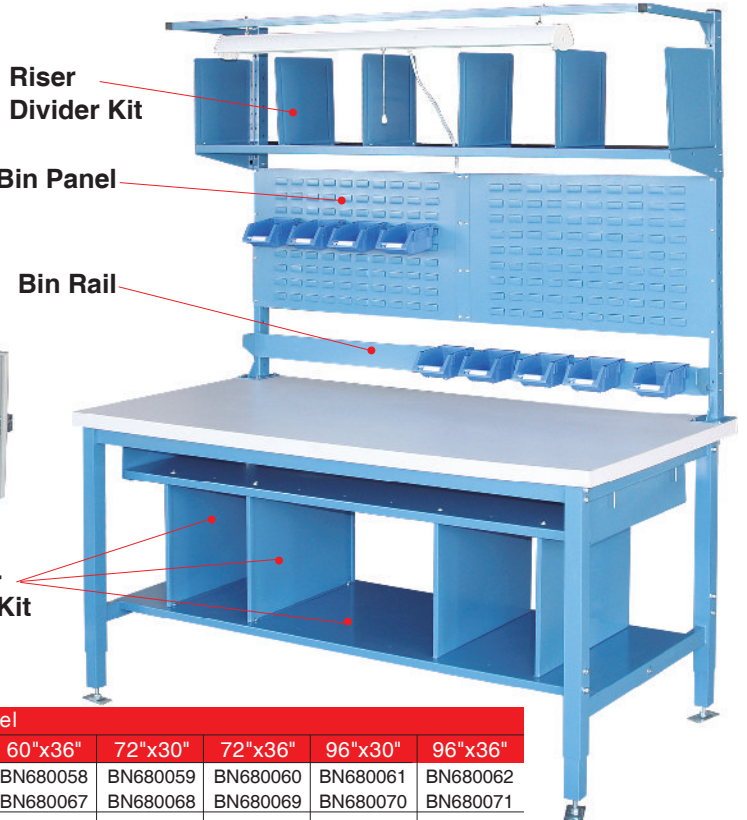


## Bench Top with Standard Edge

Material	Thickness	Model								
		48"x24"	48"x30"	60"x24"	60"x30"	60"x36"	72"x30"	72"x36"	96"x30"	96"x36"
Extra Plastic	1 1/4"	BN680054	BN680055	BN680056	BN680057	BN680058	BN680059	BN680060	BN680061	BN680062
	2 1/4"	BN680063	BN680064	BN680065	BN680066	BN680067	BN680068	BN680069	BN680070	BN680071
Steel	1 1/4"	BN680072	BN680073	BN680074	BN680075	BN680076	BN680077	BN680078	BN680079	BN680080
	1 1/4"	BN680081	BN680082	BN680083	BN680084	BN680085	BN680086	BN680087	BN680088	BN680089
Timber	2"	BN680090	BN680091	BN680092	BN680093	BN680094	BN680095	BN680096	BN680097	BN680098
	1 1/4"	BN680099	BN680100	BN680101	BN680102	BN680103	BN680104	BN680105	BN680106	BN680107
Stainless Steel	1 1/4"	BN680108	BN680109	BN680110	BN680111	BN680112	BN680113	BN680114	BN680115	BN680116
	2"	BN680117	BN680118	BN680119	BN680120	BN680121	BN680122	BN680123	BN680124	BN680125
Plastic	1 3/4"	BN680126	BN680127	BN680128	BN680129	BN680130	BN680131	BN680132	BN680133	BN680134
	2 1/4"	BN680135	BN680136	BN680137	BN680138	BN680139	BN680140	BN680141	BN680142	BN680143

## Accessories

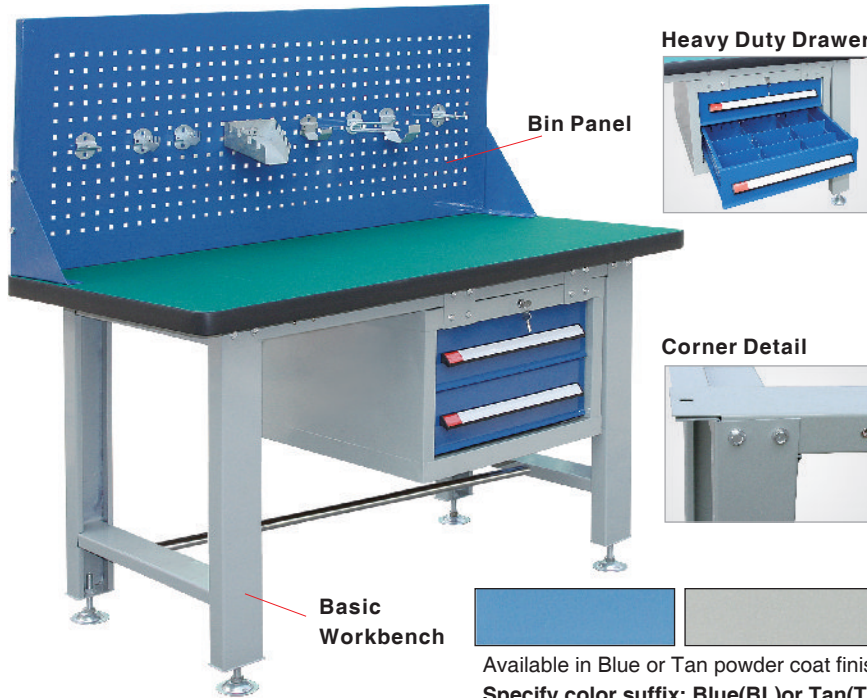
Article	Model	Size	Article	Model	Size
Basic Workbench Kit	BN680001	48"Lx24"W	Lower Shelf Kit	BN680029	60"L
	BN680002	48"Lx30"W		BN680030	72"L
	BN680003	60"Lx24"W		BN680031	96"L
	BN680004	60"Lx30"W	Bin Panel	BN680032	48"L
	BN680005	60"Lx36"W		BN680033	60"L
	BN680006	72"Lx30"W		BN680034	72"L
	BN680007	72"Lx36"W		BN680035	96"L
	BN680008	96"Lx30"W	Riser Divider Kit	BN680036	60"L
	BN680009	96"Lx36"W		BN680037	72"L
BN680010	60"Lx30"W	BN680038		96"L	
Cabinet Workbench Kit	BN680011	72"Lx30"W	Bin Rail	BN680039	48"L
	BN680012	96"Lx30"W		BN680040	60"L
	BN680013	48"L		BN680041	72"L
Light Bracket	BN680014	60"L	BN680042	96"L	
	BN680015	72"L	Drawer	BN680043	6"H
	BN680016	96"L		BN680044	12"H
	BN680017	48"L		BN680045	16"H
Riser Steel Shelf with Bracket	BN680018	60"L	Plastic Bin	BN680046	7" x 4 3/4" x 3 3/8"
	BN680019	72"L	Caster Leg	BN680047	5" x 4 3/4" x 16 3/8"
	BN680020	96"L	Upright	BN680048	48"H
	BN680021	48"L	Riser Malamine Shelf with Bracket and Support	BN680049	48"L
BN680022	60"L	BN680050		60"L	
BN680023	72"L	BN680051		72"L	
BN680024	96"L	BN680052		96"L	
15" Lower Shelf with Back Stop	BN680025	48"L	Lamphold without Fluorescent Light	BN680053	48"
	BN680026	60"L			
	BN680027	72"L			
	BN680028	96"L			



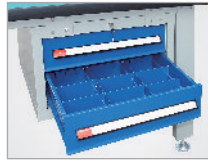
# INDUSTRIAL WORKBENCH/ UTILITY TRUCK

## Industrial Workbench

Full welded structure for leg frame, 2"x4" leg size, strong material of 14 gauge steel, 32" high. Capacity of 2000 lbs for 2" thick top, and 1000 lbs for 1.5" top. Can use table vice on timber top. Easy assemble. Suit for working shop, lab site, assemble and packing site.



Heavy Duty Drawer



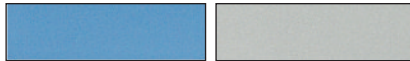
Corner Detail



Industrial Workbench

Article	Model	Size
<b>Basic Workbench</b> (Bench top not included)	BN690001	48"Lx24"W
	BN690002	48"Lx30"W
	BN690003	60"Lx24"W
	BN690004	60"Lx30"W
	BN690005	60"Lx36"W
	BN690006	72"Lx30"W
BN690007	72"Lx36"W	
<b>Drawer</b>	BN690008	H6"x2PCS
	BN690009	H4"x4PCS
<b>Bin Panel</b>	BN690010	48"Lx18" H
	BN690011	60"Lx18" H
	BN690012	72"Lx18" H

Basic Workbench



Available in Blue or Tan powder coat finish.  
Specify color suffix: Blue(BL)or Tan(TN).

## Heavy Duty Utility Truck

Portable material handling system brings organization to sorting, receiving, inspection and shipping areas. Strong 18 gauge steel tube structure offers maximum durability. Rolls smoothly on 2 swivel, 2 rigid casters, handles on side for easy move. Clip-resistant powder coat finish. Choose single or double sided truck and hooks to best suit your needs.



Caster



Adjustable Feet

## Heavy Duty Utility Truck with Adjustable Feet

Model	L" x W" x H"	Panel type	Remark
BN690013	37 <sup>3</sup> / <sub>4</sub> x 24 x 61 <sup>1</sup> / <sub>2</sub>	3pcs SHP	Single Sided
BN690014		1pcs SHP+2pcs BP	
BN690015		2pcs SHP+1pcs BP	
BN690016	37 <sup>3</sup> / <sub>4</sub> x 24 x 61 <sup>1</sup> / <sub>2</sub>	6pcs SHP	Double sided
BN690017		2pcs SHP+4pcs BP	
BN690018		4pcs SHP+2pcs BP	

## Heavy Duty Utility Truck with Caster

Model	L" x W" x H"	Panel type	Remark
BN690019	37 <sup>3</sup> / <sub>4</sub> x 24 x 43 <sup>3</sup> / <sub>4</sub>	3pcs SHP	Single Sided
BN690020		1pcs SHP+2pcs BP	
BN690021		2pcs SHP+1pcs BP	
BN690022	37 <sup>3</sup> / <sub>4</sub> x 24 x 43 <sup>3</sup> / <sub>4</sub>	6pcs SHP	Double sided
BN690023		2pcs SHP+4pcs BP	
BN690024		4pcs SHP+2pcs BP	

SHP =Square Hole Panel ; BP =Bin Panel



## Hook Accessories

### Double Hook

Model	L x W(mm)	Dia.
BN690025	25 x 35	Φ6
BN690026	50 x 35	
BN690027	75 x 35	



### U Hook

Model	L x W(mm)	Dia.
BN690028	72 x 36	Φ6
BN690029	25 x 55	
BN690030	20 x 36	

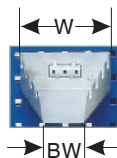


### Rod Hook

Model	Dia.
BN690031	Φ60
BN690032	Φ90

### Saw Hook

Model	L x H(mm)	Groove L x W(mm)
BN690033	64 x 36	15 x 7



### Wrench Hook

Model	L x W x BW (mm)	Groove L x W(mm)
BN690034	125x145x72	15 x 7



### Plier Hook

Model	L (mm)	Dia.
BN690035	150	Φ6
BN690036	100	

# SERVICE CART

## Plastic Service Cart 500lb Capacity

Rugged structural plastic cart for all types of applications including industrial, medical and food preparation. Won't rust, dent, peel or chip, is easily cleaned and is virtually maintenance free. Comfort -grip push handle allows easy steering. Lightweight cart rolls easily on 2 swivel, 2 rigid non-marking casters. Choose **Optional Full-Pneumatic Wheels** for a soft ride and easy rolling over rough surfaces. Personalize your cart with our great accessories. Assembles easily.



## Plastic Service Cart

Model	Tray (L" x W" x H")	Overall (L" x W" x H")	Wheel	Number of Tray	Capacity (lbs)	N.W. (lbs)
BN690037	31 <sup>1</sup> / <sub>8</sub> x 17 <sup>1</sup> / <sub>8</sub> x 4 <sup>3</sup> / <sub>8</sub>	39 <sup>3</sup> / <sub>4</sub> x 17 <sup>1</sup> / <sub>8</sub> x 33 <sup>1</sup> / <sub>2</sub>	φ 5"x1"	2	500	32
BN690038				3		41
BN690039	37 <sup>3</sup> / <sub>8</sub> x 25 <sup>5</sup> / <sub>8</sub> x 4 <sup>3</sup> / <sub>8</sub>	46 x 25 <sup>5</sup> / <sub>8</sub> x 33 <sup>1</sup> / <sub>2</sub>	φ 5"x1"	2	500	41
BN690040				3		55



Full-Pneumatic Wheel

## Steel Service Cart



BN690041

Organized and secure valuable tools, parts or assemblies with these all welded steel cabinets, stronger drawers hold 100lbs, open easily on side mounted tracks and lock with central cylinder lock. Aluminium full width handles for better grip and flush, catch-free front. Drawer divider available to make the space in the drawer as your want. 4 caster of 2 rigid and 2 swivel with brake. Option adjustable feet available.



Heavy Duty Drawer



Adjustable Feet



Caster



BN690043



BN690042

## Steel Service Cart

Article	Model	L" x W" x H"	Color	Drawer
Steel Service Cart with Caster	BN690041	23 <sup>3</sup> / <sub>5</sub> x 17 <sup>4</sup> / <sub>5</sub> x 34 <sup>3</sup> / <sub>5</sub>	RED/BLACK	H4"x4; H8"x1
	BN690042	23 <sup>3</sup> / <sub>5</sub> x 17 <sup>4</sup> / <sub>5</sub> x 38 <sup>3</sup> / <sub>5</sub>		H4"x2; H6"x2; H8"x1
	BN690043	23 <sup>3</sup> / <sub>5</sub> x 17 <sup>4</sup> / <sub>5</sub> x 42 <sup>1</sup> / <sub>2</sub>		H4"x3; H6"x2; H8"x1
	BN690044	23 <sup>3</sup> / <sub>5</sub> x 17 <sup>4</sup> / <sub>5</sub> x 34 <sup>3</sup> / <sub>5</sub>	TAN/BLUE	H4"x4; H8"x1
	BN690045	23 <sup>3</sup> / <sub>5</sub> x 17 <sup>4</sup> / <sub>5</sub> x 38 <sup>3</sup> / <sub>5</sub>		H4"x2; H6"x2; H8"x1
	BN690046	23 <sup>3</sup> / <sub>5</sub> x 17 <sup>4</sup> / <sub>5</sub> x 42 <sup>1</sup> / <sub>2</sub>		H4"x3; H6"x2; H8"x1
Steel Service Cart with Adjustable Feet	BN690047	23 <sup>3</sup> / <sub>5</sub> x 17 <sup>4</sup> / <sub>5</sub> x 30 <sup>7</sup> / <sub>10</sub>	RED/BLACK	H4"x4; H8"x1
	BN690048	23 <sup>3</sup> / <sub>5</sub> x 17 <sup>4</sup> / <sub>5</sub> x 34 <sup>3</sup> / <sub>5</sub>		H4"x2; H6"x2; H8"x1
	BN690049	23 <sup>3</sup> / <sub>5</sub> x 17 <sup>4</sup> / <sub>5</sub> x 38 <sup>3</sup> / <sub>5</sub>		H4"x3; H6"x2; H8"x1
	BN690050	23 <sup>3</sup> / <sub>5</sub> x 17 <sup>4</sup> / <sub>5</sub> x 30 <sup>7</sup> / <sub>10</sub>	TAN/BLUE	H4"x4; H8"x1
	BN690051	23 <sup>3</sup> / <sub>5</sub> x 17 <sup>4</sup> / <sub>5</sub> x 34 <sup>3</sup> / <sub>5</sub>		H4"x2; H6"x2; H8"x1
	BN690052	23 <sup>3</sup> / <sub>5</sub> x 17 <sup>4</sup> / <sub>5</sub> x 38 <sup>3</sup> / <sub>5</sub>		H4"x3; H6"x2; H8"x1

# STEEL FOLDING GATE/ WINDOW GUARD/BARRIER

**Steel Folding Gates** are designed to secure dock doors, receiving doors, doorways, garage and service doors, hallways and entrance ways up to 12 feet wide without sacrificing visibility or air circulation.

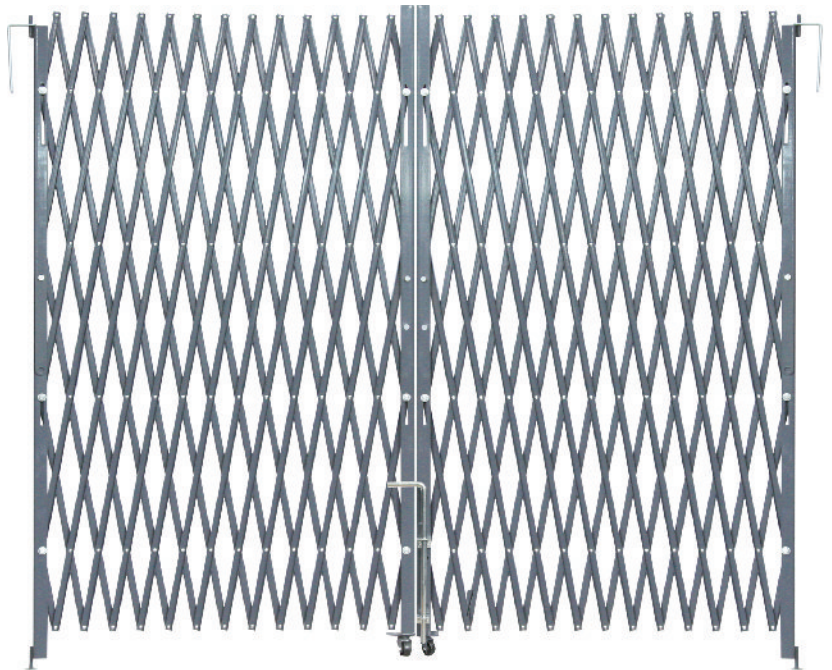
- Heavy duty steel U channel webbing
- Riveted back to back with high quality steel galvanized rivets.
- Heavy-duty 1 1/2" x 1 1/2" vertical member angles.
- Solid steel casters.
- Locks on the right standard, and locking on the left available upon request.
- Locking bar included. Padlock order separately.
- Custom sizes, galvanized and powder coating colors available.
- Gates loose 6' in height when extended.



"L" bracket mounting gate to wall



Bottom pin inserted into floor hole



Gates fold completely swing 180°



Metal durable wheel



Bolt for double gate, can be knocked down

## Single Folding Gate

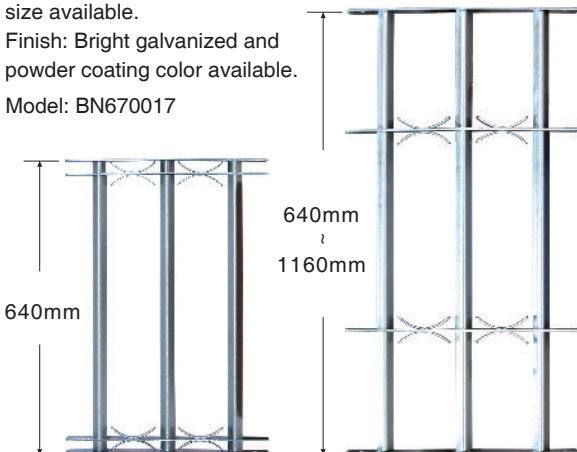
Model	W' x H'	Width* Retracted
BN670001	5.5 x 5	10
BN670002	5.5 x 6.5	12.5
BN670003	5.5 x 8	14
BN670004	6.5 x 6.5	13
BN670005	6.5 x 8	15
BN670006	7.5 x 6.5	14.5
BN670007	7.5 x 8	18

## Double Folding Gate

Model	W' x H'	Width* Retracted
BN670010	10 X 5	10
BN670011	10 X 6.5	12.5
BN670012	10 X 8	14
BN670013	12 X 6.5	13
BN670014	12 X 8	15
BN670015	16 X 6.5	14.5
BN670016	16 X 8	18

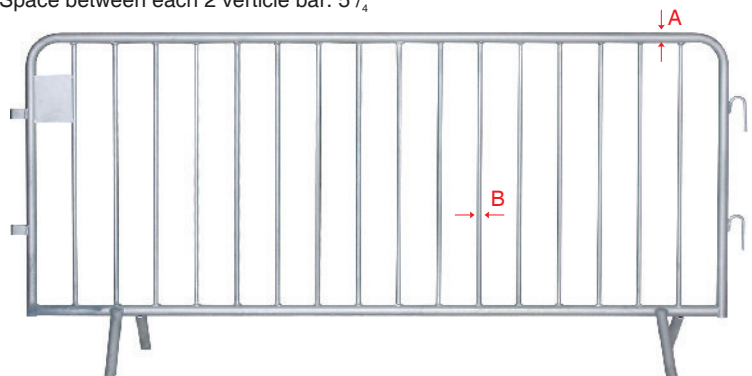
## Height Adjustable Window Guard

Heavy duty steel strip 35mm wide and 4mm thickness for frame, and 20 x 20 x 3mm tri-angle steel for grid. Height adjustable from 640mm to 1160mm, width of 450mm, safety thief guard for your window. Customer size available. Finish: Bright galvanized and powder coating color available. Model: BN670017



## Crowd Control Barrier

Direct pedestrians with these all-welded steel barrier. Easy to transport and storage. Section include the couplers that join units in runs of any length. Standard size: 102" long x 40" high. Space between each 2 verticle bar: 5 1/4"



Standard Size (mm)	Model		
	BZP	Hot Galv.	Powder Coating
A: Φ32x2 B: Φ16x1.2	BN670018	BN670021	BN670024
A: Φ35x2 B: Φ16x1.2	BN670019	BN670022	BN670025
A: Φ41x2 B: Φ16x1.2	BN670020	BN670023	BN670026

# BARRICADE GATE

Seal off hazards and protect against accidents. Our barricade gates are perfect for temporary access control. You can seal off access to any area temporarily for maintenance, cleaning and repair work yet still allow multiple entry points. They're ideal for warehouses or factories, and for restricting aisle access in retail environments. They're riveted back to back with high quality galvanised steel rivets; the rivets hold up to more stress and will not rust or crack and the webbing won't separate. Multiple gates can be connected end to end to form longer runs.

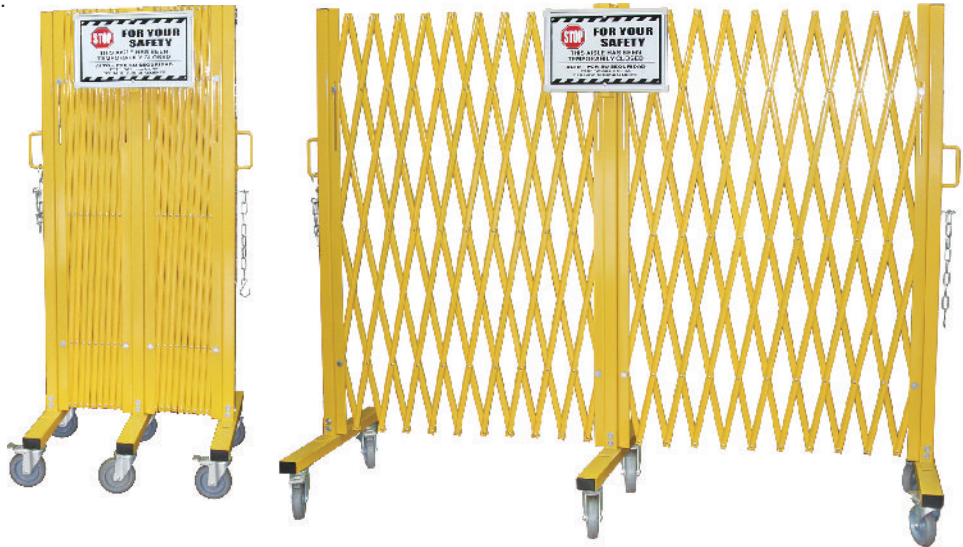
## Heavy Duty Barricade Gate

### Specifications:

- 1) Dimensions :  
23 1/2" L x 24" W x 64" H
- 2) Expanded dimensions :  
20' L x 52 1/2" H
- 3) Weight: 154lbs
- 4) Moves easily on six 5" casters,  
(4 brake, 2 swivel)
- 5) Includes warning sign

## Heavy Duty Barricade Gate

Material	Model	Weight (lbs)
Steel	BN670027	154



## Light Duty Barricade Gate

### Specifications:

- 1) Dimensions :  
16" L x 15" W x 40" H
- 2) Expanded dimensions :  
135" L x 40" H
- 3) Moves easily on four 2" casters
- 4) Finish: powder coated, yellow and black

**Material: heavy duty steel or heavy duty aluminium**



## Light Duty Barricade Gate

Material	Model	Weight (lbs)
Steel	BN670028	45
Aluminium	BN670029	25

## Plastic Barricade

The plastic extensible barrier redirects traffic in unsafe and risky conditions.

It extends from 13" to 100" with a flexible bending system.

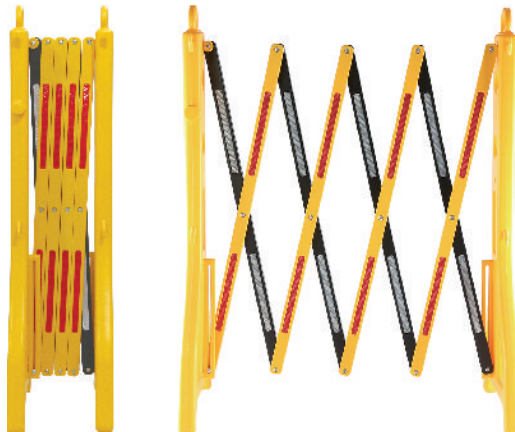
Width(full open): 100"

Width(full closed): 13"

Height: 37"

Weight: 5lbs±0.4lbs

We can produce as your special request



## Plastic Barricade

Material	Model	Weight (lbs)
Plastic	BN670031	5

# WOVEN WIRE MESH SECURITY PARTITION

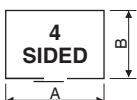
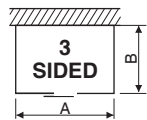
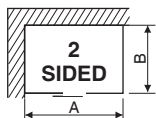
## Complete Wire Mesh Security Room

Woven wire mesh security rooms provide high-visibility security, safety, protection and access control. These pre-designed rooms are available with or without a roof, in 2, 3 and 4 sided configurations. Constructed from high quality 10 gauge steel wire, woven into an extremely strong frame for heavy-duty strength and enhanced appearance. Modular components makes installation easy, usually requires no change to existing heating, lighting or ventilation system. Components bolt together quickly and can be easily relocated. Long-lasting maintenance-free powder coat gray finish. Available in 7', 8' and 10' high in five standard sizes ranging from 10' x 10' to 30' x 20'. All models can include a 5' W x 8' H sliding gate or hinged door with mortise cylinder lock, or service window as required.



### Specifications

- 10 Gauge steel wire woven into 1 1/2" diamond mesh, securely clinched to framing.
- Vertical frames to be 1 1/4" x 5/8" cold rolled 'C' steel channels with 1/4" bolt holes.
- Horizontal frames to be 1" x 1/2" cold rolled steel channels.
- All joints to be mortised and tenoned.
- Center reinforcing bar to be two cold rolled steel channels 1" x 3/8" riveted through wire mesh at 3'6" from floor, additional bar required for 12' high partition.
- Top capping bar to be 1 1/2" x 1" cold rolled steel channel, with 1/4" bolts 30" O.C.
- Corner posts to be 1 1/4" x 1 1/4" steel angles with 1/4" bolt holes.
- Floor sockets to be cast aluminum.
- Door frames to be 1 1/4" x 1 1/2" cold rolled steel channel.
- Sliding doors to have two four-wheel roller bearing truck/hangers enclosed in a galvanized steel box track and one steel channel bottom guide.
- Hinge doors to have 1 1/2" pairs of butt hinges bolted to door and transom frame.
- Locking to be hasps arranged for padlocking, or specify: cylinder mortise type lock operated by key outside, recessed knob inside.
- All partitions to have 3" sweep space and include hardware and accessories for proper installation, specify partition to wall connection hardware separately.
- Finish to be powder coated.



Room without Roof				Room with Roof				
2 Sides	3 Sides	4 Sides						
Model	Model	Model	A'	B'	Ht'	2 Sides Model	3 Sides Model	4 Sides Model
BN660001	BN660016	BN660031	10	10	7	BN660046	BN660061	BN660076
BN660002	BN660017	BN660032	20	10	7	BN660047	BN660062	BN660077
BN660003	BN660018	BN660033	20	15	7	BN660048	BN660063	BN660078
BN660004	BN660019	BN660034	20	20	7	BN660049	BN660064	BN660079
BN660005	BN660020	BN660035	30	20	7	BN660050	BN660065	BN660080
BN660006	BN660021	BN660036	10	10	8	BN660051	BN660066	BN660081
BN660007	BN660022	BN660037	20	10	8	BN660052	BN660067	BN660082
BN660008	BN660023	BN660038	20	15	8	BN660053	BN660068	BN660083
BN660009	BN660024	BN660039	20	20	8	BN660054	BN660069	BN660084
BN660010	BN660025	BN660040	30	20	8	BN660055	BN660070	BN660085
BN660011	BN660026	BN660041	10	10	10	BN660056	BN660071	BN660086
BN660012	BN660027	BN660042	20	10	10	BN660057	BN660072	BN660087
BN660013	BN660028	BN660043	20	15	10	BN660058	BN660073	BN660088
BN660014	BN660029	BN660044	20	20	10	BN660059	BN660074	BN660089
BN660015	BN660030	BN660045	30	20	10	BN660060	BN660075	BN660090

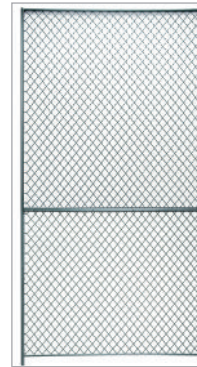
**SLIDING SERVICE WINDOW** Mounted in 5' wide panel. Padlockable. Includes 12" D shelf. Add suffix A to any model above.

# WOVEN WIRE MESH SECURITY PARTITION

## Accessories for Build Your Own

### Basic Panel

7' High		8' High		10' High	
Model	W'	Model	W'	Model	W'
BN660107	1	BN660108	1	BN660110	1
BN660207	2	BN660208	2	BN660210	2
BN660307	3	BN660308	3	BN660310	3
BN660407	4	BN660408	4	BN660410	4
BN660507	5	BN660508	5	BN660510	5



Basic Panel



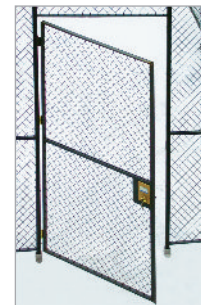
Adjustable Panel

### Adjustable Panel

7' High		8' High		10' High	
Model	W'	Model	W'	Model	W'
BNAP0707	2 1/2 to 12	BNAP0708	2 1/2 to 12	BNAP0710	2 1/2 to 12

### Single Hinged Door with Transom

7' High		8' High		10' High	
Model	W'	Model	W'	Model	W'
BNHS7307	3	BNHS7308	3	BNHS7310	3
BNHS7407	4	BNHS7408	4	BNHS7410	4



Single Hinged Door with Transom



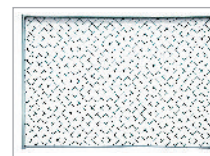
Single Sliding Door with Transom

### Single Sliding Door with Transom

8' High		10' High		8' High		10' High	
Model	W'	Model	W'	Model	W'	Model	W'
BNSS7308	3	BNSS7310	3	BNSSF508	5	BNSSF510	5
BNSS7408	4	BNSS7410	4	BNSSF608	6	BNSSF610	6
BNSS7508	5	BNSS7510	5	BNSSF808	8	BNSSF810	8
BNSS7608	6	BNSS7610	6				

### Transom Panel

Model	H' x W'	Model	H' x W'	Model	H' x W'	Model	H' x W'
BNTP7103	1x3	BNTP7104	1x4	BNTP7303	3x3	BNTP7304	3x4
BNTP7203	2x3	BNTP7204	2x4	BNTP7205	2x5	BNTP7206	2x6



Transom Panel



Trace Kit for Sliding Door

### Trace Kit for Sliding Door

Model	L'	Model	L'
BNTK7103	4	BNTK7104	6

### Corner Post

7' High	8' High	10' High
Model	Model	Model
BNCP7107	BNCP7108	BNCP7110

### Channel Stiffener Post

7' High	8' High	10' High
Model	Model	Model
BNLP7107	BNLP7108	BNLP7110



Corner Post



Channel Stiffener Post

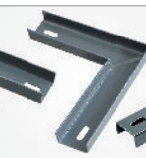
### Other Parts



BN663124  
Wall Clip Kit



BN663130  
T Splice Channel



BN663128  
Corner Splice Channel



BN663126  
Straight Splice Channel



BN663131  
3 Keys for Mortise Lock



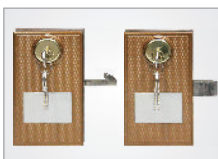
BN663132  
Door Hasp Padlock Kit



BN663136  
Aluminum Floor Socket



BN663142  
5' x 8' Service Window



BN663138  
Mortise Doorlock w/2 Key



BN663137  
Hardware Bag for Wire Partition



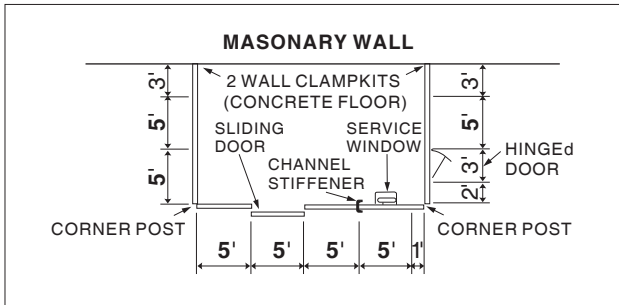
BN663146  
10' Top Capping



Service Window Closed

# WOVEN WIRE MESH SECURITY PARTITION

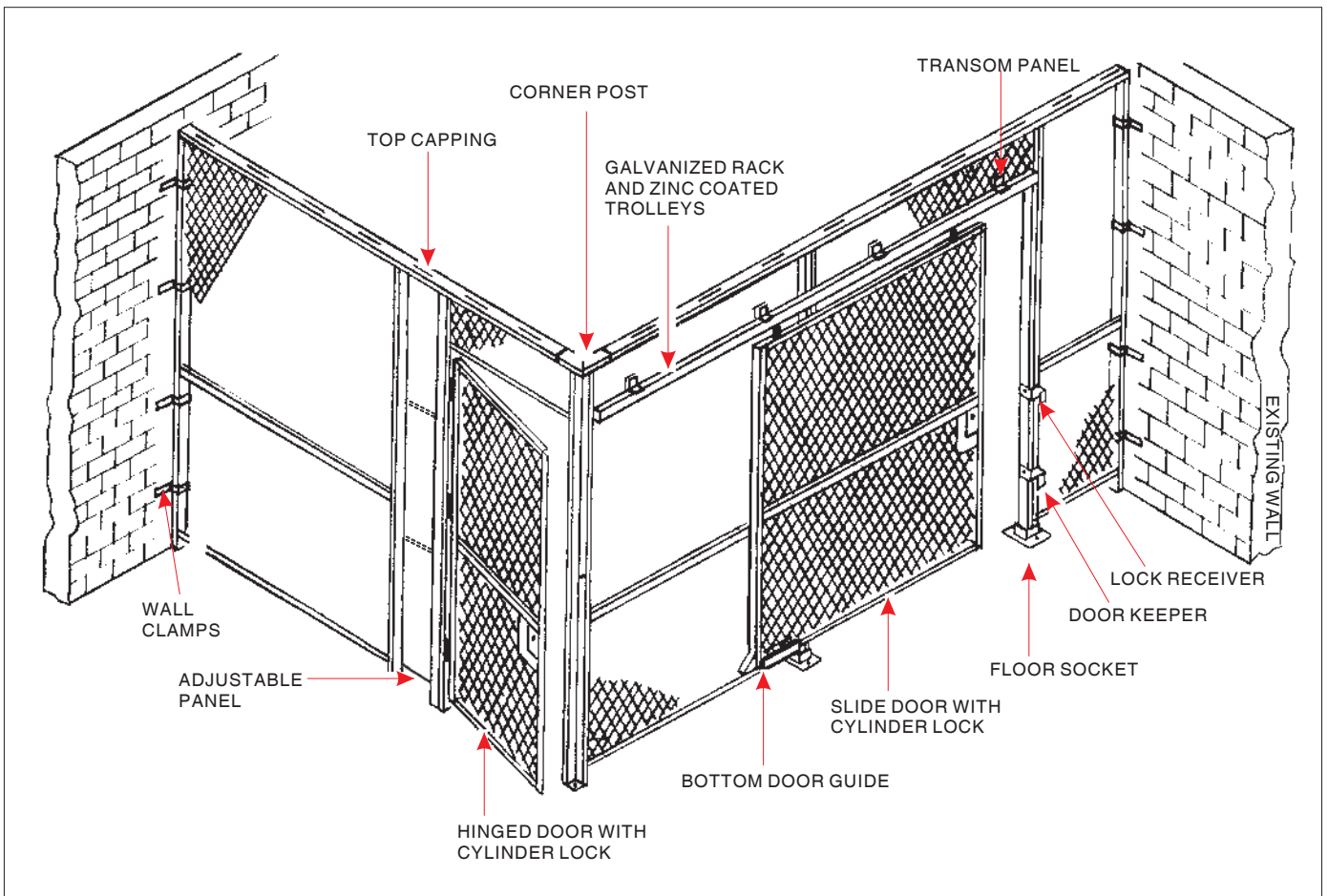
## Easy to Plan and Order Modular Components



TOP VIEW OF A 3-SIDED PARTITION (21' WIDE BY 13' DEEP)

- 1, Make a floor plan include measurements. Determining partition height, 7', 8', 10'.
- 2, Indicate doors, gates and service windows and their size and location. Show the direction of the slide gate or hinged door either left- or right-handed and swing in or out.
- 3, Be sure to utilize as many 5 ft. wide panels as possible for most efficient cost. Add one channel stiffener post for every 2 panels. (Stiffener posts are needed for each door and gate).
- 4, If partition is to be installed between two walls, you may want to use the adjustable panel from stock instead of a special width often required. Wall clamp kit for each partition to wall connection. Use corner posts, or adjustable corner posts at all corners.
- 5, Top capping in 10-foot section must be needed in the construction. Calculate the total linear feet and round up to the nearest multiple of 10, then divide by 10 for the number of top capping sections. Example: Actual 75'5" linear feet: order 8 top capping sections (80 ft total).

## Convenient to Installation



- 1, At least 2 people required to assemble partition.
- 2, If starting at an existing wall, start first panel from wall, if it is a free-standing room, start at a corner.
- 3, Bolt panels together loosely. **Do not secure floor sockets to the floor until fully assembled.**
- 4, install channel stiffener posts every 10-15 feet. Channel stiffener posts are needed for doors.
- 5, After all panels and doors are assembled, attached top capping channel. Top capping channel should span panels and splices should be in the middle of a panel for maximum strength.
- 6, Tighten panel bolts.
- 7, Attach floor sockets using appropriate hardware.

# PALLET RACKING ENCLOSURE KIT

Stronger steel mesh structure allow visible ventile to separate room, (2) side panels, (2) bi-parting doors, trolley, door track and lower door guides. Custom solution for securing your racking units without limiting accessibility. Mounted on a galvanized steel top track with heavy-duty galvanized trolleys, our rack enclosure are built strong for serious industrial applications. The fully-suspended design allows for easy access when using forklifts, pallet jacks and other in-plant vehicles. Sliding gates are framed in structural angle and reinforced with tubing on both sides for superior rigidity. Custom built to your specific needs, pallet racking enclosure kit are ideal for safeguarding inventory in racking and picking areas. Use them to control traffic and limit circulation along sensitive alley ways. Standard accessories include padlock hasps. Optional back panel and side panel. All gates are sealed in a grey powder-coated paint finish for maximum durability.



Top Track with Heavy Duty Galvanized Trolleys



Track Hanger Bracket



Mesh Clip



Padlock Hasp



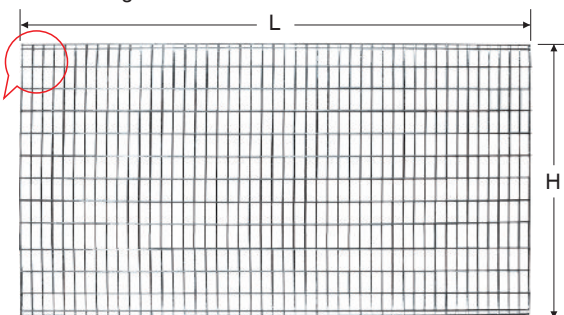
Single Door Guide



Double Door Guide



Mesh Clip



Optional Back Mesh Panel

## Pallet Racking Enclosure Kit

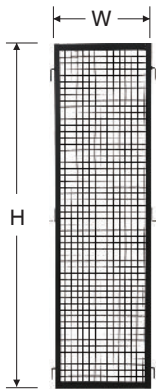
Model	Overall Size L" x D" x H"
BN8030101	96 x 36 x 96
BN8030102	96 x 42 x 96
BN8030103	96 x 48 x 96
BN8030104	120 x 36 x 96
BN8030105	120 x 42 x 96
BN8030106	120 x 48 x 96
BN8030107	144 x 36 x 96
BN8030108	144 x 42 x 96
BN8030109	144 x 48 x 96

## Optional Back Mesh Panel

Model	Overall Size L" x H"
BN8030201	96 x 48
BN8030202	120 x 48
BN8030203	144 x 48

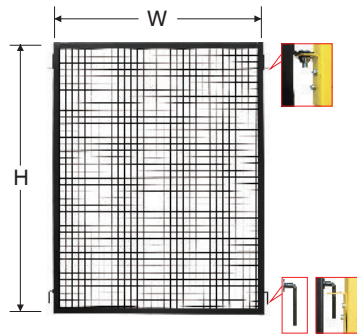
# MACHINE GUARD

All-steel, welded wire mesh panel, hinged doors and post system held in place with pins, brackets, and safety nuts. Allows up to 12" sweep and can be reconfigured. Safety socket wrench is included. Meets ANSI and OSHA standards.



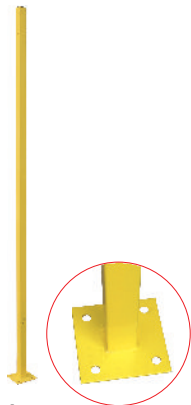
Wire Mesh Panel

Model	Size W'xH'
BN8020101	5x7
BN8020102	4x7
BN8020103	3x7
BN8020104	2x7



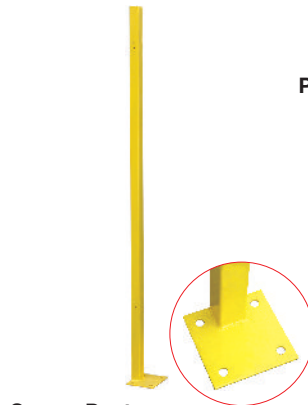
Wire Mesh Panel

Model	Size W'xH'
BN8020201	8x5
BN8020202	5x5
BN8020203	4x5
BN8020204	3x5
BN8020205	2x5



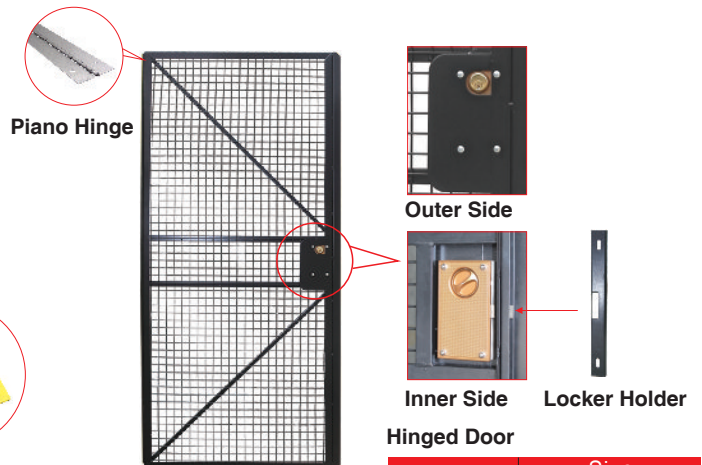
In Line Post

Model	Size H'
BN8020301	8
BN8020303	6



Corner Post

Model	Size H'
BN8020302	8
BN8020304	6



Hinged Door

Model	Size W'xH'
BN8020401	4x7
BN8020402	3x7
BN8020403	4x5

# RACK GUARDIAN ANTI-COLLAPSE MESH SYSTEM

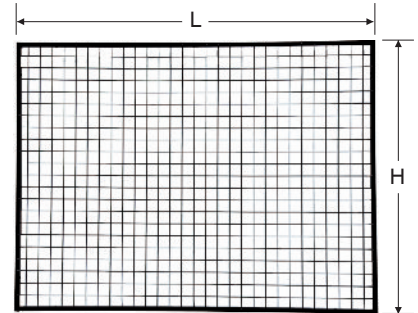
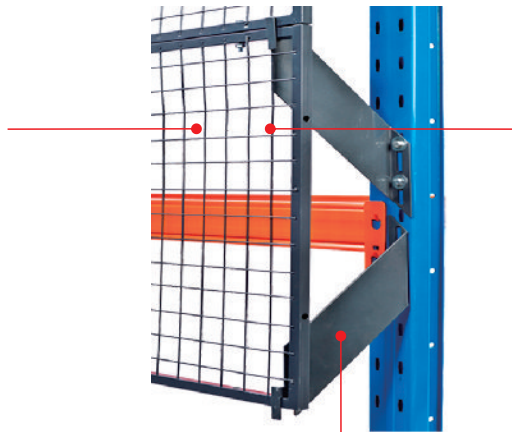
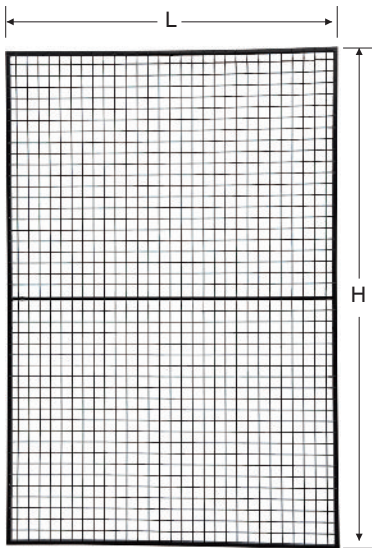


## Mesh Panel

Designed to create a physical barrier between warehouse operatives and dislodged goods, the Rack Guardian Anti-collapse meshed system is a simple modular based anti-collapse solution compatible with all major makes of pallet racking systems.

Easy to install, the pre-drilled mesh panels are simply bolted together and secured to the uprights using a range of universal stand-off brackets. To achieve an optimum fit panels both horizontally and vertically, can be cut to size and finished with a U-profile to enclose exposed wires.

Should the RG anti-collapse system be required to be installed above the racking, various sized RG-extensions can be bolted to create additional height.



### Mesh Panel

Model	Size Lx H(mm)
BN8050101	1500 x 2250
BN8050102	1200 x 2250
BN8050103	1000 x 2250
BN8050104	700 x 2250

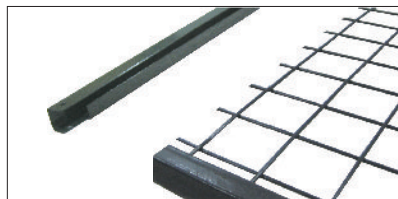
### Mesh Panel

Model	Size Lx H(mm)
BN8050201	1500 x 1125
BN8050202	1200 x 1125
BN8050203	1000 x 1125
BN8050204	700 x 1125



### Bracket

Model	Size D(mm)
BN8050301	50
BN8050302	100
BN8050303	150
BN8050304	200
BN8050305	250
BN8050306	300



### U-Profile

Model	Size L(mm)
BN8050401	2250
BN8050402	1500
BN8050403	1200
BN8050404	1125
BN8050405	1000
BN8050406	700



### Hardware

Model	Size
BN8050501	M8x45

# HEAVY DUTY RIGID STEEL CONTAINER MOBILE VISIBLE SECURITY CAGE

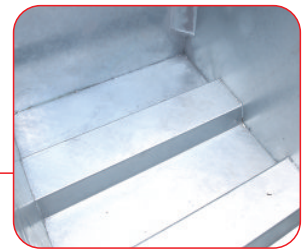
Rated at 4000 lbs. capacity and stackable 4 to 5 high.  
 Made with durable 13 ga steel sides and 12 ga steel base.  
 Ideal for storing forgings, castings and machine parts.  
 Move more material, cut handling time, prevent product damage, save floor space and better utilize air space.  
 Durable hot galvanized finish and custom colors are available.  
 Custom designs of rigid or collapsible steel containers are our specialty.



Reinforce in 4 Corners



Stopper for Stack



Space for Forklift

## Heavy Duty Rigid Steel Container

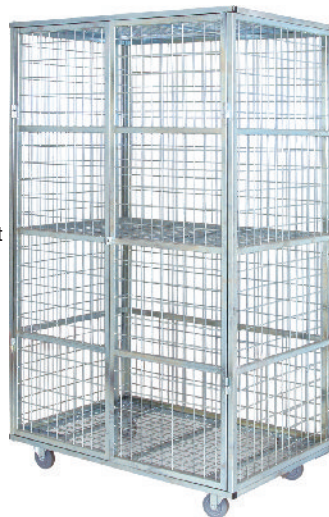
Model	Overall Size W x D x H(mm)
BN8090101	1200X1100X1500

2 tier mobile security cage which will hold up to 1000 lbs lockable double doors (padlock not provided) are fitted and easy steering on the 200mm nylon wheels.

The frame and base are in 25mm x 25mm x 1.5mm square hollow section which gives high strength without excessive weight. 50mm x 75mm x 4mm welded mesh infilled walls, door and roof panels give total security with full visibility.

Can also design and manufacture special for customer.

Finish: power coated or zinc plated available



## Mobile Visible Security Cage

Model	Overall Size L x W x H (mm)	Caster Size & Type	Weight (lbs)
BN670030	1100 x 760 x 1800	4" Nylon 2 fixed, 2 swivel	200

# CYLINDER CADDY

Cylinder Caddy, Pallet Truck, Capacity 600 lb., Width 38 In., Height 35-1/2 In., Length 35-1/2 In., Cylinder Capacity 4, Tank Dia. 7 to 9.5 In., Red, Powder Coat Finish, Material Steel



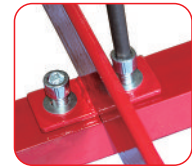
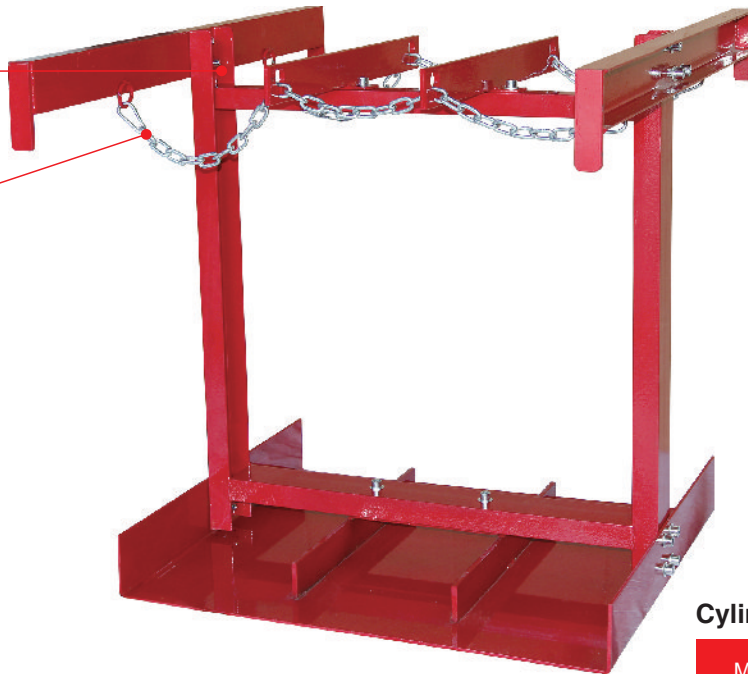
Welded Bolt on the U Post



Anti-Collapse Chain



Flat Pack



Easy Assemble

## Cylinder Caddy 6 in 1

Model	Overall Size L" x W" x H"
BN8040101	35½ x 38 x 35½

Cylinder Caddy, Pallet Truck, Capacity 400 lb., Width 16 In., Height 39 In., Length 39 In., Cylinder Capacity 4, Tank Dia. 7 to 9.5 In., Red, Powder Coat Finish, Material Steel



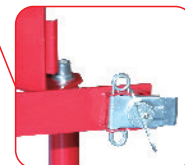
Easy Assemble



Flat Pack



Anti-Collapse Chain



Rotate the kniv to let the clip reach the clip on the top arm

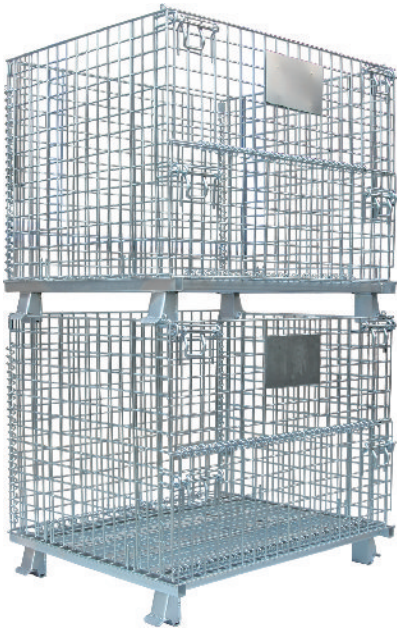
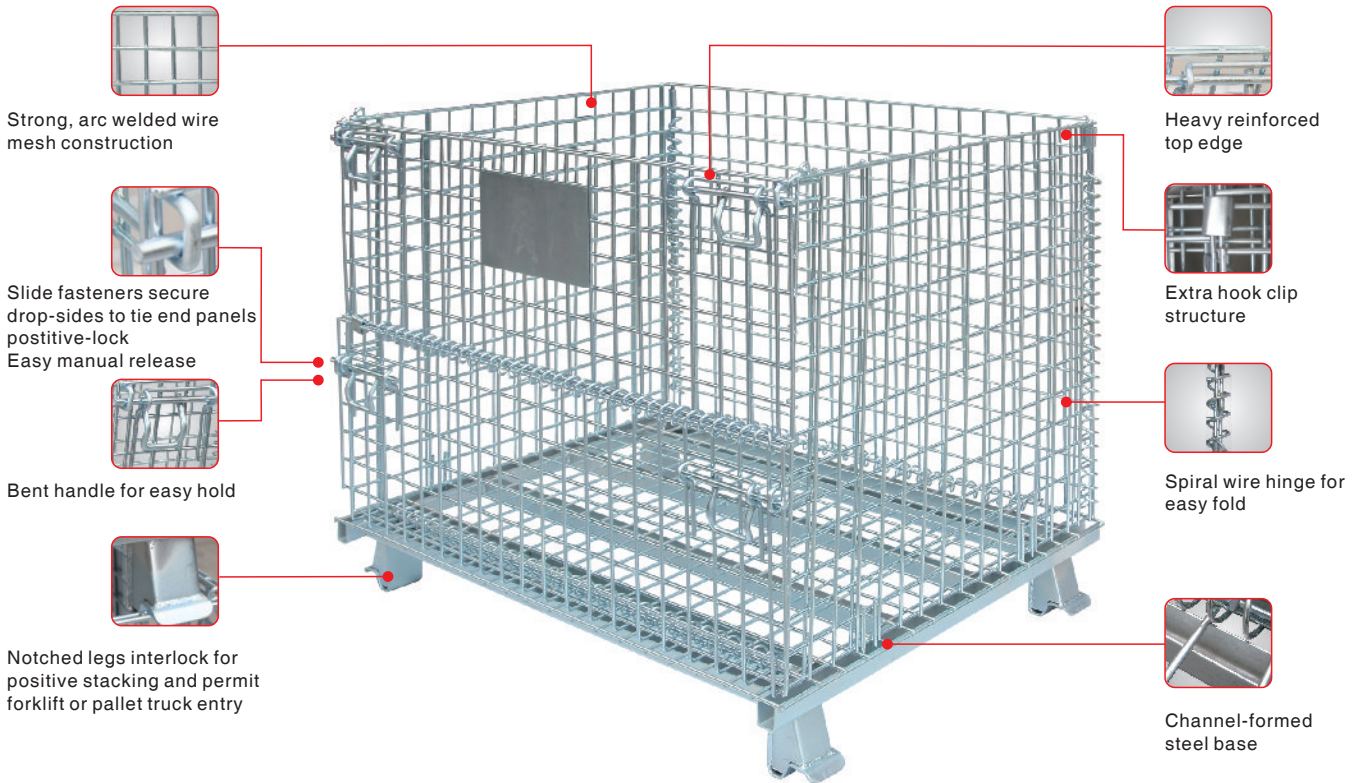


Rotate the kniv at the opposite direction for lock tight

## Cylinder Caddy 4 in 1

Model	Overall Size L" x W" x H"
BN8040102	39 x 16 x 39

# FOLDING WIRE CONTAINER



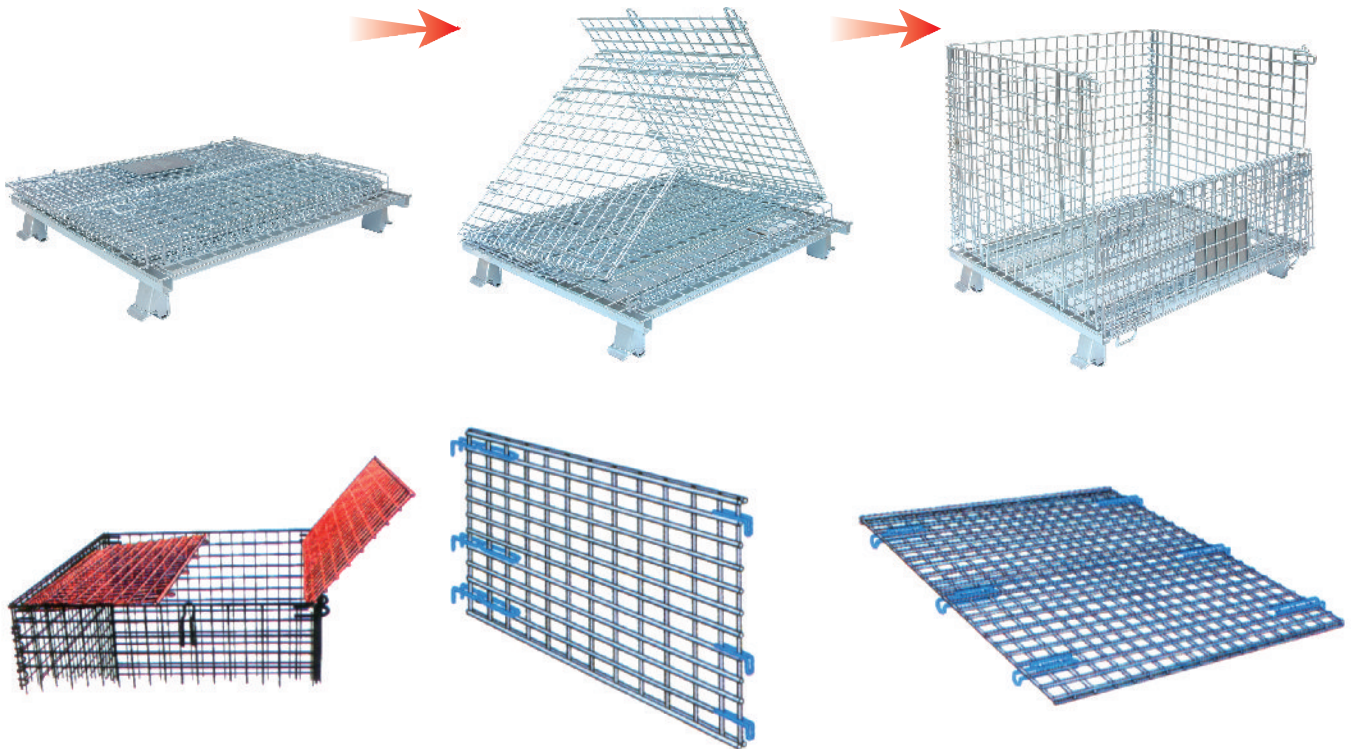
These folding wire containers are made from strong, arc welded wire mesh construction with heavily reinforced corners and channel -formed base. The open mesh allows excellent visibility of contents and inventory control with minimal dust build up. Sets up and folds in seconds for valuable time and space savings. Drop gate allows access when stacked. Durable powder coat finish resists rust and corrosion better than zinc plated finish.

- Options:
- Vertical and horizontal divider for easy storage.
  - Hinged lid and padlock for security.
  - Mobilize the container with castor kit.

Model	Overall Lx W x H ( )	Inside Size Lx W x H ( )	Load Capacity (lbs)	Wire Diameter	Mesh Size ( )	Wt. (lbs)	Quantity Can Be Stacks
BN6150101	40 x 32 x 33	38 x 30 x 28	3000	3GA	2 x 2	125	4
BN6150102	47 x 40 x 35	45 x 38 x 30	4000	3GA	2 x 2	176	4
BN6150103	40 x 32 x 33	38 x 30 x 28	2000	3GA	4 x 2	110	3
BN6150104	47 x 40 x 35	45 x 38 x 30	2000	3GA	4 x 2	154	3
BN6150105	40 x 32 x 33	38 x 30 x 28	2000	4GA	2 x 2	115	4
BN6150106	47 x 40 x 35	45 x 38 x 30	3000	4GA	2 x 2	163	4
BN6150107	32 x 24 x 25	30 x 22 x 20	1000	3GA	2 x 2	77	4
BN6150108	60 x 44 x 40	58 x 42 x 35	3000	3GA	2 x 2	280	4

# FOLDING WIRE CONTAINER

## Easy Assembly

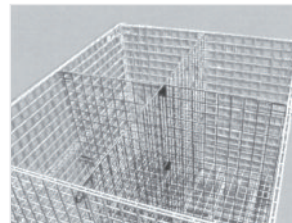


### Hinged Lid

Model	Size L x H ( )
BN6150401	24 x 32
BN6150402	32 x 40
BN6150403	40 x 47
BN6150404	44 x 60

### Vertical Divider

Model	Size L x H ( )
BN6150201	15 x 20
BN6150202	19 x 28
BN6150203	19 x 30
BN6150204	22.5 x 28
BN6150205	22.5 x 30
BN6150206	29 x 35



### Horizontal Divider

Model	Size W x H ( )
BN6150301	22 x 20
BN6150302	30 x 28
BN6150303	30 x 30
BN6150304	38 x 28
BN6150305	38 x 30
BN6150306	42 x 35



Fix castor with braking



Suffix of P for 5 sides plastic board addition



Steel bottom plate for extra capacity



### Swivel Castor with Brake

Model	Size H ( )
BN6150501	5
BN6150502	6



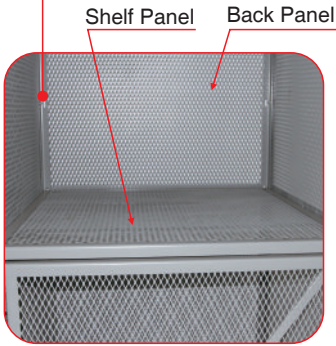
### Fix Castor

Model	Size H ( )
BN6150603	5
BN6150604	6

# EMPLOYEE DISPATCHER WIRE LOCKER



Easy Bolt Connect



Shelf Panel Back Panel

### Roof Panel / Shelf Panel

Model	Size L"xW"
BN8060101	36x36
BN8060102	36x48
BN8060103	36x60
BN8060104	48x48
BN8060105	48x60

### Side Panel

Model	Size W"xH"
BN8060201	36x90
BN8060202	48x90
BN8060203	60x90

### Back Panel

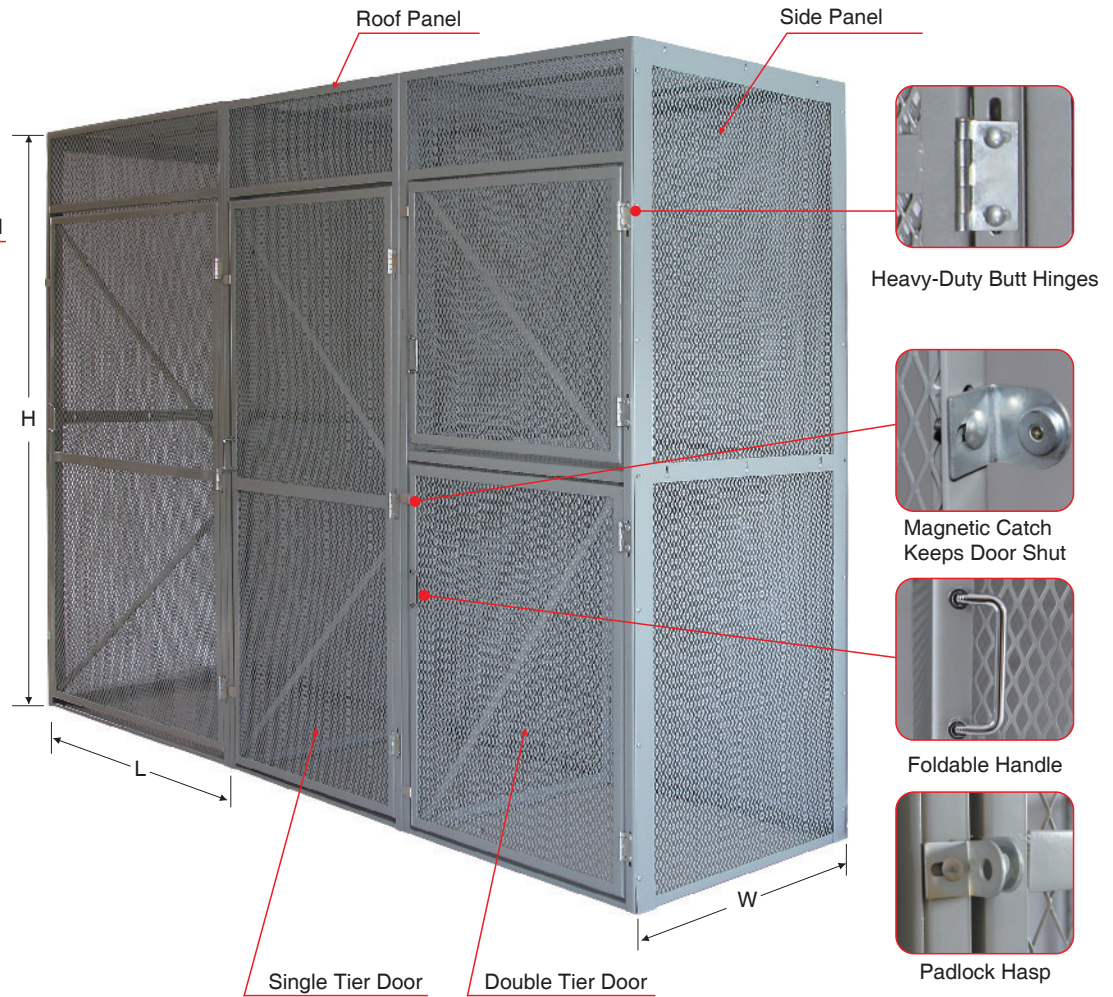
Model	Size L"xH"
BN8060301	36x90
BN8060302	48x90

### Single Tier Door

Model	Size L"xH"
BN8060401	36x90
BN8060402	48x90

### Double Tier Door

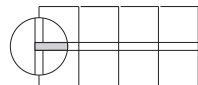
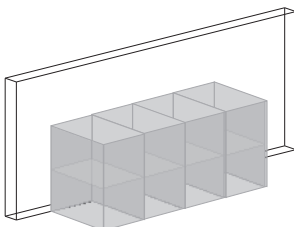
Model	Size L"xH"
BN8060501	36x90
BN8060502	48x90



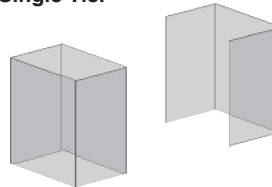
- Lockers feature individually locked compartments making them well-suited for a variety of operations, especially where service employees need to pick up daily work orders and equipment. Available in three standard sizes ranging from 36"x 36"x90" to 48"x60"x90".
- Pre-punched components for easy assembly. Additional units are easily connected via pre-punched holes.
- Doors are equipped with steel pin butt hinges to withstand years of heavy use and padlock hasps for security.
- Standard with a grey powder coating finish
- Optional rear door available for filling stock and inventory control
- A single dispatcher can feed items into individually-accessible compartments
- Angle steel Frame 30x30x2.75mm
- 11 gauge expanded metal

Modular design makes lockers easy to plan, install and relocate. Available in single and double tier units, and can be combined. Begin with Starter unit, single or double tier; complete row with Add-On units.

Single row locker configurations installed against an existing wall do not require optional back panels. Double row locker configurations share common back panels.



### Single Tier



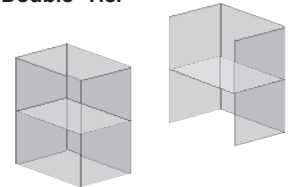
#### Starter

- 1 Single tier door
- 2 Side panel
- 1 Back panel

#### Add-On

- 1 Single tier door
- 1 Side panel
- 1 Back panel

### Double Tier



#### Starter

- 1 Double tier door
- 2 Side panel
- 1 Shelf
- 1 Back panel

#### Add-On

- 1 Double tier door
- 1 Side panel
- 1 Shelf
- 1 Back panel

# HEAVY DUTY WIRE LOCKER



Clothes Hanger



Chrome Plated Lock Handle



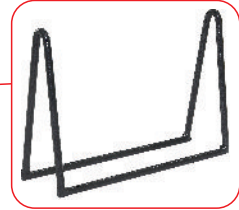
Timber Finished Seat



Hard Hat Shelf



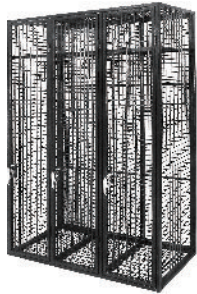
Pin Hinges



Shoe Rack



Adjustable Foot Bolt



- Made of heavy-gauge, full-welded structure wire mesh.
- Knock-down structure and hinges make assembly easily.
- Chrome plated locks and timber finished seat.
- Metal hanger and shoe hooks for storing clothes in order and neatness.
- Power coated finish and various colors available.
- OEM services provided.



### Single Door

Model	Size WxDxH(mm)
BN8070101	400x450x2100
BN8070102	300x450x2100

### Double Door

Model	Size WxDxH(mm)
BN8070201	800x450x2100
BN8070202	600x450x2100

### Triple Door

Model	Size WxDxH(mm)
BN8070301	1200x450x2100
BN8070302	900x450x2100

This barrier is blow-moulded, including one barrier two rotatable legs. It can be joint to a line to direct the way or divide the road to two parts. Also, it could be circled for repair work.

Material: Polypropylene, rubber, reflective sheeting

Height: 1000mm

Length: 2000mm

Thickness: 55mm

Weight: 13kg±0.5kg

We can produce as your special request.

Linking facility allowing system can be easily joined.



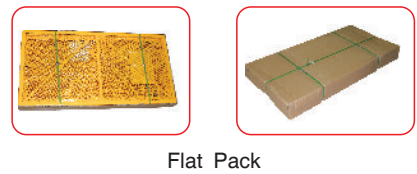
### Barrier Guard Polypropylene

Model	Overall Size L x W x H (mm)	Color
BN8080101	2000 x 55 x 1000	Yellow
BN8080102	2000 x 55 x 1000	Red

# CYLINDER STORAGE CABINET

Meet all relevant NFPA and OSHA standards for storing dangerous and flammable materials. Made of heavy-gauge, expanded metal. Heavy-duty butt hinges and padlock hasp. Magnetic catch keeps door shut when not locked. Vertical storage lockers accept all standard vertical cylinders up to 59-3/4". Feature adjustable chains to aid vertical storage, adjust in 1 increments. Horizontal cylinder storage lockers accommodate 20- and 33-1/2 lb. LPG cylinders and canisters.

1-1/2 x 1/8 angle iron frame  
14-ga. steel top  
14-ga. Expanded metal  
Predrilled holes allow lagging to floor



**Cylinder Storage Cabinet 4 Horizontal**

**Cylinder Storage Cabinet 8 Horizontal**

**Cylinder Storage Cabinet 16 Horizontal**

Model	Overall Size (W" x D" x H")
BN8010101	31 x 30 x 35

Model	Overall Size (W" x D" x H")
BN8010102	31 x 30 x 65

Model	Overall Size (W" x D" x H")
BN8010103	60 x 30 x 65

# CYLINDER STORAGE CABINET



**Cylinder Storage Cabinet 18 Vertical**

Model	Overall Size (W" x D" x H")
BN8010104	60 x 30 x 65



**Cylinder Storage Cabinet 8 Horizontal and 9 Vertical**

Model	Overall Size (W" x D" x H")
BN8010105	60 x 30 x 65



**Cylinder Storage Cabinet 9 Vertical**

Model	Overall Size (W" x D" x H")
BN8010106	31 x 30 x 65



**Cas Cylinder Cage -18 Vertical**  
Assembled Pack Available

Model	Overall Size (W" x D" x H")
BN8010107	60 x 30 x 72



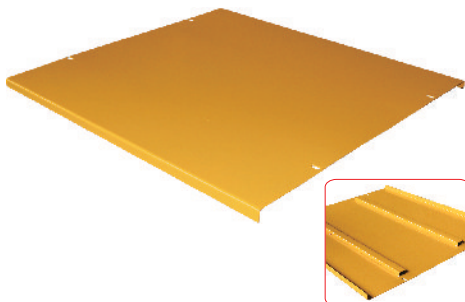
**Cas Cylinder Cage -9 Vertical**  
Assembled Pack Available

Model	Overall Size (W" x D" x H")
BN8010108	31 x 30 x 72



**Cas Cylinder Cage -4 Forklift Vertical**  
Assembled Pack Available

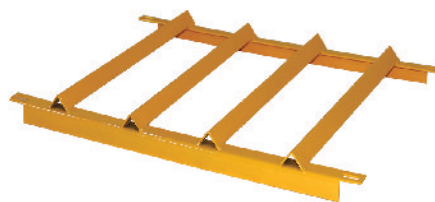
Model	Overall Size (W" x D" x H")
BN8010109	31 x 30 x 41



Reinforce Underneath

**Steel Flat Shelf**

Model	Size (W" x D")
BN8010201	29 x 28
BN8010202	30 x 28



**Steel Angle Shelf**

Model	Size (W" x D")
BN8010301	29 x 28
BN8010302	30 x 28



**Anti-collapse Chain**

Model	Size (W")
BN8010401	34
BN8010402	31

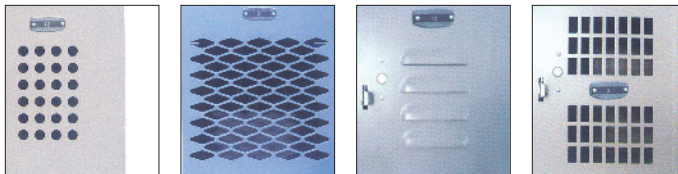
# MULTIPLE TIER VENTILATED LOCKERS

## Recessed Steel Handle for Safety and Appearance Type

Opening W" x D" x H"	Doors	Wt lbs	Model	Model	Model	Model
<b>SINGLE TIER (1 WIDE)</b>						
12 x 12 x 72	1	75	BN650001-A	BN650001-B	BN650001-C	BN650001-D
12 x 18 x 72	1	80	BN650002-A	BN650002-B	BN650002-C	BN650002-D
15 x 18 x 72	1	98	BN650003-A	BN650003-B	BN650003-C	BN650003-D
<b>SINGLE TIER (3 WIDE)</b>						
12 x 12 x 72	3	202	BN650004-A	BN650004-B	BN650004-C	BN650004-D
12 x 18 x 72	3	236	BN650005-A	BN650005-B	BN650005-C	BN650005-D
15 x 18 x 72	3	262	BN650006-A	BN650006-B	BN650006-C	BN650006-D
<b>DOUBLE TIER (1 WIDE)</b>						
12 x 12 x 36	2	80	BN650007-A	BN650007-B	BN650007-C	BN650007-D
12 x 15 x 36	2	85	BN650008-A	BN650008-B	BN650008-C	BN650008-D
12 x 18 x 36	2	95	BN650009-A	BN650009-B	BN650009-C	BN650009-D
<b>DOUBLE TIER (3 WIDE)</b>						
12 x 12 x 36	6	210	BN650010-A	BN650010-B	BN650010-C	BN650010-D
12 x 15 x 36	6	217	BN650011-A	BN650011-B	BN650011-C	BN650011-D
12 x 18 x 36	6	242	BN650012-A	BN650012-B	BN650012-C	BN650012-D
<b>SIX TIER (1 WIDE)</b>						
12 x 12 x 12	6	82	BN650013-A	BN650013-B	BN650013-C	BN650013-D
12 x 15 x 12	6	87	BN650014-A	BN650014-B	BN650014-C	BN650014-D
12 x 18 x 12	6	92	BN650015-A	BN650015-B	BN650015-C	BN650015-D
<b>SIX TIER (3 WIDE)</b>						
12 x 12 x 12	18	240	BN650016-A	BN650016-B	BN650016-C	BN650016-D
12 x 15 x 12	18	248	BN650017-A	BN650017-B	BN650017-C	BN650017-D
12 x 18 x 12	18	260	BN650018-A	BN650018-B	BN650018-C	BN650018-D



Recessed Steel Handle for Safety and Appearance



Door type A

Door type B

Door type C

Door type D

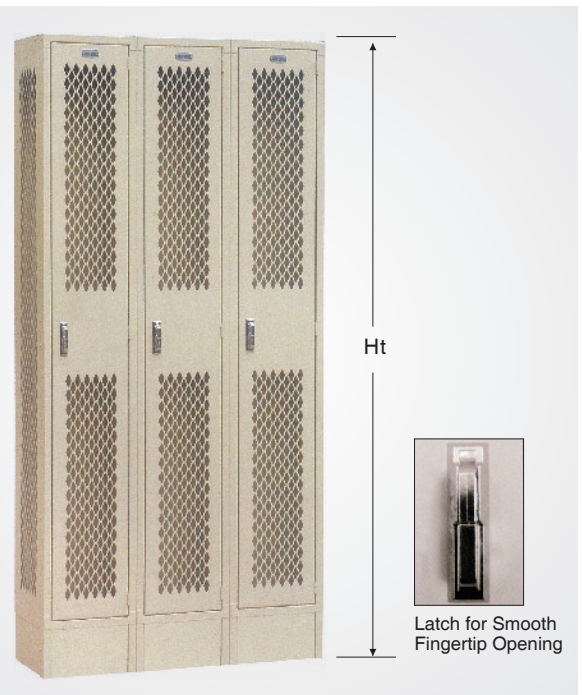
Steel multiple tier ventilated locker provide performance and reliability. Reinforced, welded frame-and-door assemblies ensure maximum security. Doors are styled with 4 different handle and lock or hasp. Durable powder coated finish resists wear and scratches for years of attractive service. Legs add 6" to height. Includes blank number plates.

### Specify door type suffix:

A, B, C, D for different Door type

## Latch for Smooth Fingertip Opening Type

Opening W" x D" x H"	Doors	Wt lbs	Model	Model	Model	Model
<b>SINGLE TIER (1 WIDE)</b>						
12 x 12 x 72	1	75	BN650019-A	BN650019-B	BN650019-C	BN650019-D
12 x 18 x 72	1	80	BN650020-A	BN650020-B	BN650020-C	BN650020-D
15 x 18 x 72	1	98	BN650021-A	BN650021-B	BN650021-C	BN650021-D
<b>SINGLE TIER (3 WIDE)</b>						
12 x 12 x 72	3	202	BN650022-A	BN650022-B	BN650022-C	BN650022-D
12 x 18 x 72	3	236	BN650023-A	BN650023-B	BN650023-C	BN650023-D
15 x 18 x 72	3	262	BN650024-A	BN650024-B	BN650024-C	BN650024-D
<b>DOUBLE TIER (1 WIDE)</b>						
12 x 12 x 36	2	80	BN650025-A	BN650025-B	BN650025-C	BN650025-D
12 x 15 x 36	2	85	BN650026-A	BN650026-B	BN650026-C	BN650026-D
12 x 18 x 36	2	95	BN650027-A	BN650027-B	BN650027-C	BN650027-D
<b>DOUBLE TIER (3 WIDE)</b>						
12 x 12 x 36	6	210	BN650028-A	BN650028-B	BN650028-C	BN650028-D
12 x 15 x 36	6	217	BN650029-A	BN650029-B	BN650029-C	BN650029-D
12 x 18 x 36	6	242	BN650030-A	BN650030-B	BN650030-C	BN650030-D
<b>SIX TIER (1 WIDE)</b>						
12 x 12 x 12	6	82	BN650031-A	BN650031-B	BN650031-C	BN650031-D
12 x 15 x 12	6	87	BN650032-A	BN650032-B	BN650032-C	BN650032-D
12 x 18 x 12	6	92	BN650033-A	BN650033-B	BN650033-C	BN650033-D
<b>SIX TIER (3 WIDE)</b>						
12 x 12 x 12	18	240	BN650034-A	BN650034-B	BN650034-C	BN650034-D
12 x 15 x 12	18	248	BN650035-A	BN650035-B	BN650035-C	BN650035-D
12 x 18 x 12	18	260	BN650036-A	BN650036-B	BN650036-C	BN650036-D

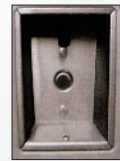


Latch for Smooth Fingertip Opening

# MULTIPLE TIER VENTILATED LOCKERS

## Steel Recessed Handle Type

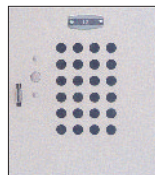
Opening W" x D" x H"	Doors	Wt lbs	Model	Model	Model	Model
<b>SINGLE TIER (1 WIDE)</b>						
12 x 12 x 72	1	75	BN650037-A	BN650037-B	BN650037-C	BN650037-D
12 x 18 x 72	1	80	BN650038-A	BN650038-B	BN650038-C	BN650038-D
15 x 18 x 72	1	98	BN650039-A	BN650039-B	BN650039-C	BN650039-D
<b>SINGLE TIER (3 WIDE)</b>						
12 x 12 x 72	3	202	BN650040-A	BN650040-B	BN650040-C	BN650040-D
12 x 18 x 72	3	236	BN650041-A	BN650041-B	BN650041-C	BN650041-D
15 x 18 x 72	3	262	BN650042-A	BN650042-B	BN650042-C	BN650042-D
<b>DOUBLE TIER (1 WIDE)</b>						
12 x 12 x 36	2	80	BN650043-A	BN650043-B	BN650043-C	BN650043-D
12 x 15 x 36	2	85	BN650044-A	BN650044-B	BN650044-C	BN650044-D
12 x 18 x 36	2	95	BN650045-A	BN650045-B	BN650045-C	BN650045-D
<b>DOUBLE TIER (3 WIDE)</b>						
12 x 12 x 36	6	210	BN650046-A	BN650046-B	BN650046-C	BN650046-D
12 x 15 x 36	6	217	BN650047-A	BN650047-B	BN650047-C	BN650047-D
12 x 18 x 36	6	242	BN650048-A	BN650048-B	BN650048-C	BN650048-D
<b>SIX TIER (1 WIDE)</b>						
12 x 12 x 12	6	82	BN650049-A	BN650049-B	BN650049-C	BN650049-D
12 x 15 x 12	6	87	BN650050-A	BN650050-B	BN650050-C	BN650050-D
12 x 18 x 12	6	92	BN650051-A	BN650051-B	BN650051-C	BN650051-D
<b>SIX TIER (3 WIDE)</b>						
12 x 12 x 12	18	240	BN650052-A	BN650052-B	BN650052-C	BN650052-D
12 x 15 x 12	18	248	BN650053-A	BN650053-B	BN650053-C	BN650053-D
12 x 18 x 12	18	260	BN650054-A	BN650054-B	BN650054-C	BN650054-D



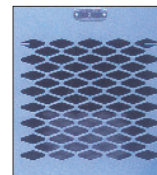
Steel Recessed Handle

### Specify door type suffix:

A, B, C, D for different  
Door type



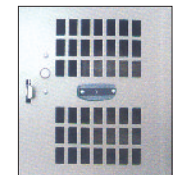
Door type A



Door type B



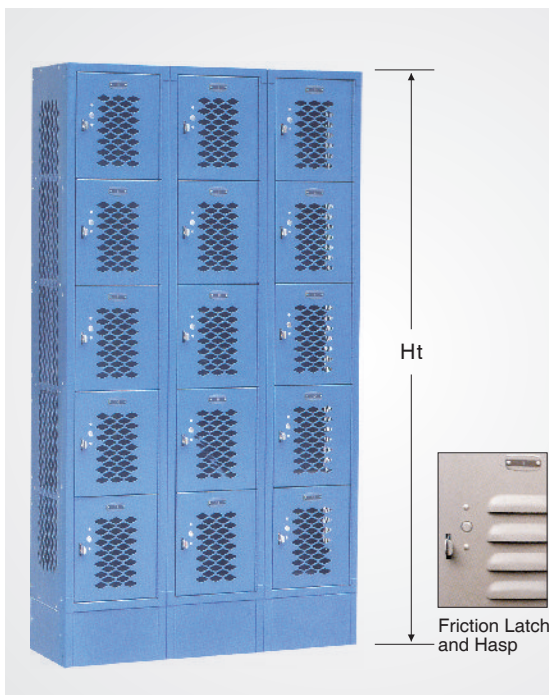
Door type C



Door type D

## Friction Latch and Hasp Type

Opening W" x D" x H"	Doors	Wt lbs	Model	Model	Model	Model
<b>SINGLE TIER (1 WIDE)</b>						
12 x 12 x 72	1	75	BN650055-A	BN650055-B	BN650055-C	BN650055-D
12 x 18 x 72	1	80	BN650056-A	BN650056-B	BN650056-C	BN650056-D
15 x 18 x 72	1	98	BN650057-A	BN650057-B	BN650057-C	BN650057-D
<b>SINGLE TIER (3 WIDE)</b>						
12 x 12 x 72	3	202	BN650058-A	BN650058-B	BN650058-C	BN650058-D
12 x 18 x 72	3	236	BN650059-A	BN650059-B	BN650059-C	BN650059-D
15 x 18 x 72	3	262	BN650060-A	BN650060-B	BN650060-C	BN650060-D
<b>DOUBLE TIER (1 WIDE)</b>						
12 x 12 x 36	2	80	BN650061-A	BN650061-B	BN650061-C	BN650061-D
12 x 15 x 36	2	85	BN650062-A	BN650062-B	BN650062-C	BN650062-D
12 x 18 x 36	2	95	BN650063-A	BN650063-B	BN650063-C	BN650063-D
<b>DOUBLE TIER (3 WIDE)</b>						
12 x 12 x 36	6	210	BN650064-A	BN650064-B	BN650064-C	BN650064-D
12 x 15 x 36	6	217	BN650065-A	BN650065-B	BN650065-C	BN650065-D
12 x 18 x 36	6	242	BN650066-A	BN650066-B	BN650066-C	BN650066-D
<b>SIX TIER (1 WIDE)</b>						
12 x 12 x 12	6	82	BN650067-A	BN650067-B	BN650067-C	BN650067-D
12 x 15 x 12	6	87	BN650068-A	BN650068-B	BN650068-C	BN650068-D
12 x 18 x 12	6	92	BN650069-A	BN650069-B	BN650069-C	BN650069-D
<b>SIX TIER (3 WIDE)</b>						
12 x 12 x 12	18	240	BN650070-A	BN650070-B	BN650070-C	BN650070-D
12 x 15 x 12	18	248	BN650071-A	BN650071-B	BN650071-C	BN650071-D
12 x 18 x 12	18	260	BN650072-A	BN650072-B	BN650072-C	BN650072-D

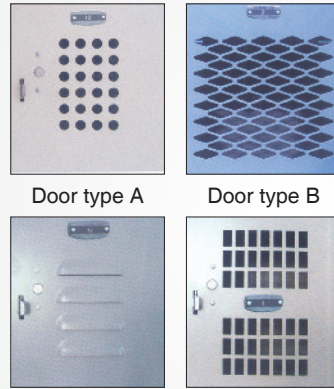


Friction Latch and Hasp

# MULTIPLE TIER VENTILATED LOCKERS

## Locke Rack 16 Person

W" x D" x H"	Model
12 x 12 x 12	BN650073-A
12 x 15 x 12	BN650074-A
12 x 18 x 12	BN650075-A
15 x 12 x 12	BN650076-A
15 x 15 x 12	BN650077-A
15 x 18 x 12	BN650078-A
12 x 12 x 12	BN650073-B
12 x 15 x 12	BN650074-B
12 x 18 x 12	BN650075-B
15 x 12 x 12	BN650076-B
15 x 15 x 12	BN650077-B
15 x 18 x 12	BN650078-B
12 x 12 x 12	BN650073-C
12 x 15 x 12	BN650074-C
12 x 18 x 12	BN650075-C
15 x 12 x 12	BN650076-C
15 x 15 x 12	BN650077-C
15 x 18 x 12	BN650078-C
12 x 12 x 12	BN650073-D
12 x 15 x 12	BN650074-D
12 x 18 x 12	BN650075-D
15 x 12 x 12	BN650076-D
15 x 15 x 12	BN650077-D
15 x 18 x 12	BN650078-D



Door type A      Door type B  
Door type C      Door type D

**Specify door type suffix:**  
A, B, C, D for different  
Door type



16 Lockers with coat rod, Custom designs available upon request.

## Closed Base

Model	Article
BN650079	12" Front Base
BN650080	15" Front Base
BN650081	12" End Base
BN650082	15" End Base
BN650083	18" End Base

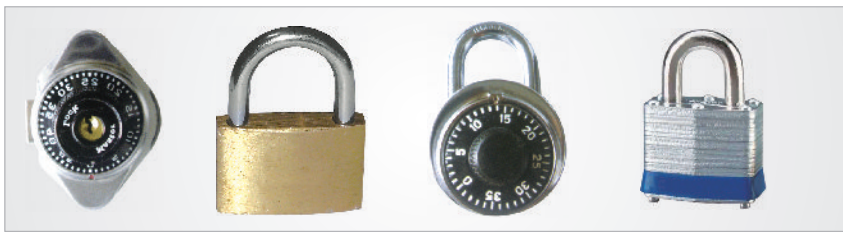


## Slope Top

Model	Opening	
	Width"	Depth"
BN650084	12	12
BN650085	12	15
BN650086	12	18
BN650087	15	18



## Lock



BN650088      BN650089      BN650090      BN650091

## Numbered Plate Kits



Model	Article
BN650092	Numbered 1-100
BN650093	Numbered 101-299
BN650094	Numbered 300-499



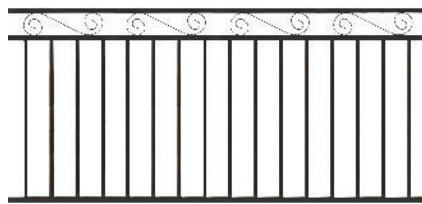
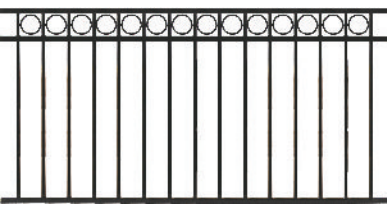
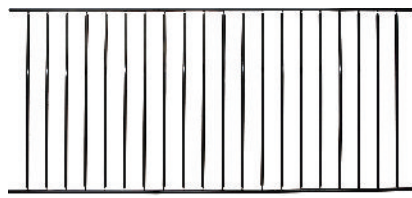
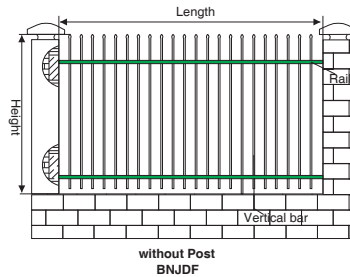
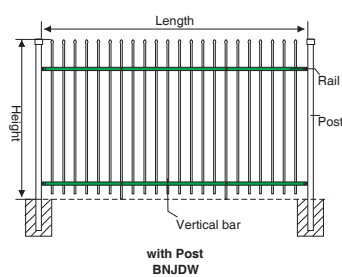
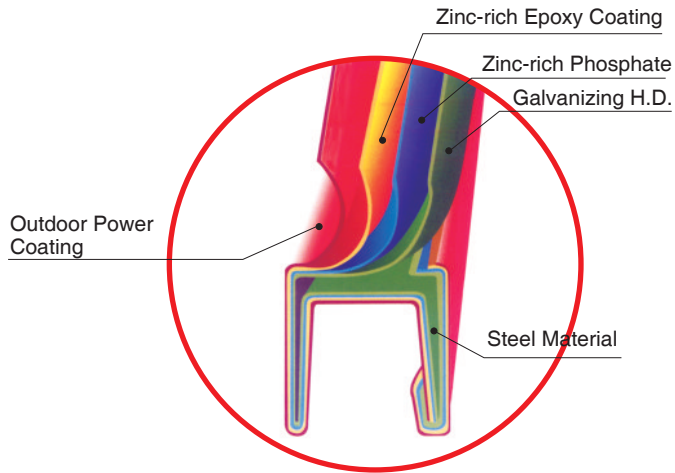
Inside Hook and Rod

Five Knuckle Hinges with Lapped and Welded Steel Door Frame

# WELDED METAL FENCES



High quality zinc dipped steel tube and high surface treatment and coating technology to assure superior anti-corrosion performance of our fencing products. Our coatings are able to withstand even the most severe weather environments. Easy to assemble and any color available.



### Connector

Model	Size (mm)
BN8100301	20

### Self-tapping Screw

Model	Size
BN8100401	M6X30



Post

### Welded Metal Fences

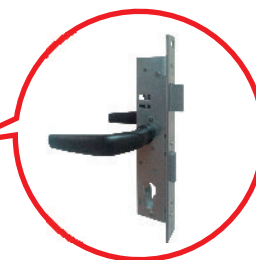
Model	Overall Size L x H(mm)
BN8100101	2400 x 1800
BN8100102	1800 x 1800
BN8100103	1500 x 1800
BN8100104	2400 x 1500
BN8100105	1800 x 1500

### Single Door

Model	Overall Size L x H(mm)
BN8100201	2400 x 1800
BN8100202	1800 x 1800
BN8100203	1800 x 1500



Single Door



Lock

### Post

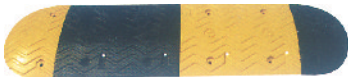
Model	Size H(mm)
BN8100501	2100
BN8100502	1800
BN8100503	1500



BN730001



BN730002



BN730003



BN730004



BN730005



BN730006



BN730007

**Rubber Speed Bump**

Model	Size LxWxH(mm)	Weight (Kg)	End LxWxH(mm)
BN730001	1000x300x50	14	
BN730002	500x350x50	10.8	175x350x50
BN730003	1000x380x50	20.1	190x380x50

**Rubber Parking Curb**

Model	Base Size (mm)	Height (mm)	Weight (kg)
BN730004	500x160	100	5
BN730005	600x130	110	5
BN730006	600x160	100	5.25

**Corner Guard**

Model	LxWxT (mm)
BN730007	800x100x8
BN730008	800x100x10
BN730009	800x100x12
BN730010	800x100x20



BN730011 BN730012



BN730013 BN730014 BN730015

**Rubber Traffic Cone**

Model	Base Size (mm)	Height (mm)	Weight (kg)
BN730011	360x360	500	1.8
BN730012	360x360	700	3.0

**PVC Traffic Cone**

Model	Base Size (mm)	Height (mm)	Weight (kg)
BN730013	275x275	450	1.4
BN730014	275x275	450	1.4
BN730015	360x360	900	5.5



BN730020 BN730021 BN730022



BN730017 BN730019

**Plastic Traffic Cone**

Model	Base Size (mm)	Height (mm)	Weight (kg)
BN730016	300x300	500	2.0
BN730017	490x490	1000	5.0
BN730018	350x350	750	2.8
BN730019	φ 420	700	1.5

**Delineator Post**

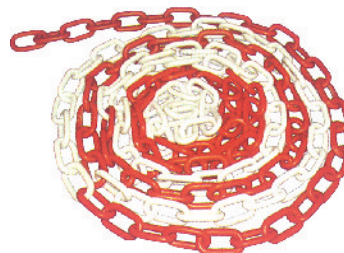
Model	Height (mm)	Weight (kg)
BN730020	450x φ 80	0.6
BN730021	600x φ 80	1.0
BN730020	800x φ 80	0.9

**Plastic Traffic Cone**



**Wide Angle Convex Safety Mirror**

Model	Specification (mm)
BN730023	φ 450
BN730024	φ 600
BN730025	φ 800
BN730026	φ 1000



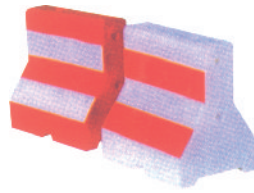
BN730027  
**Plastic Chain**



BN730028  
**Warning Triangle**



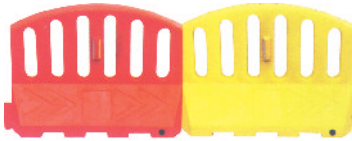
BN730029



BN730031



BN730032



BN730030

### Interlocking Safety Barricade

Model	Length (mm)	Top Width (mm)	Bottom Width (mm)	Height (mm)	Net Weight (kg)	Water Capacity (kg)
BN730029	1650	150	450	650	12.5	300
BN730030	1500	150	430	1200	19	200
BN730031	600	150	430	600	4	60

### Anti-crash Bucket

Model	Height (mm)	Diameter (mm)	Net Weight (kg)	Water Capacity (kg)
BN730032	824	582	5	400

### Reflective Vest



BN730033



BN730034



BN730035



BN730036

### Reflective Fabric Series



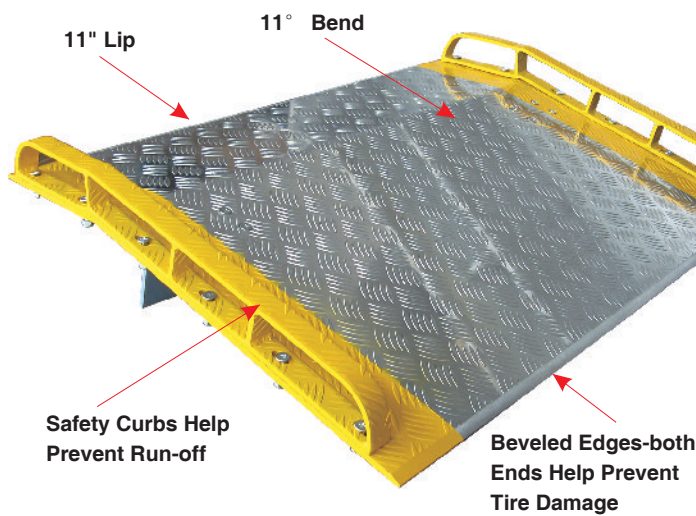
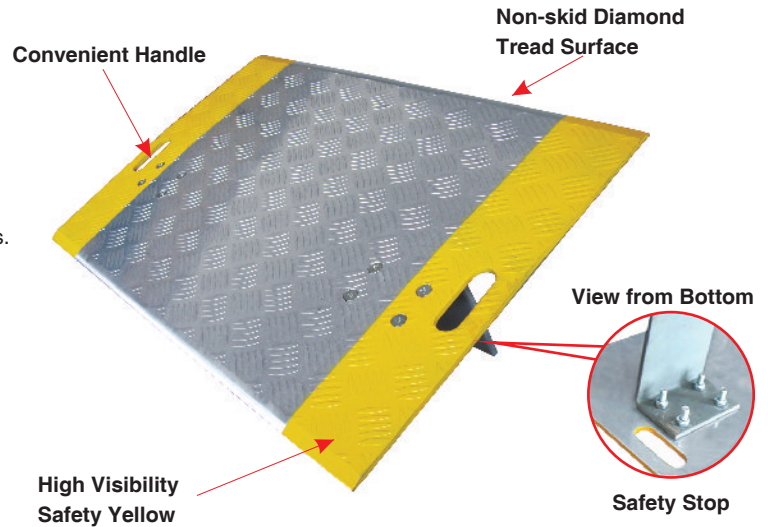
Model	Product Name	Color	Specification	Backing	Coefficient of Retroreflection R'
BN730037	High Reflective Fabric (T/C)	Grey	Width 100-132cm, can be slitted into stripes	65% Polyester, 35% cotton	>380(cd/lx.m <sup>2</sup> )
BN730038	High Reflective Fabric (pol)	Grey	Width 100-132cm, can be slitted into stripes	100% Polyester	>380(cd/lx.m <sup>2</sup> )
BN730039	High Reflective Heat-transfer Flim	-	Width 100-132cm, can be slitted into stripes	Heat Activated Adhesive Flim	>380(cd/lx.m <sup>2</sup> )
BN730040	Ordinary Reflective Fabric (T/C)	Grey	Width 100-132cm, can be slitted into stripes	65% Polyester, 35% cotton	>20(cd/lx.m <sup>2</sup> )
BN730041	Ordinary Reflective Fabric (pol)	Grey	Width 100-132cm, can be slitted into stripes	100% Polyester	>20(cd/lx.m <sup>2</sup> )
BN730042	High Reflective Fabric (T/C)	Silver	Width 100cm	65% Polyester, 35% cotton	>380(cd/lx.m <sup>2</sup> )
BN730043	Ordinary Reflective Fabric (pol)	Different colors	Width 100-132cm, can be slitted into stripes	100% Polyester	>20(cd/lx.m <sup>2</sup> )
BN730044	Silver Flame Retardant Reflective Fabric	Silver	Width 100cm, can be slitted into stripes, hand cut or guillotined	Nomex Fibre	>380(cd/lx.m <sup>2</sup> )

## High Traction Aluminum Dock Plate

Diamond tread surface provides more traction points per square foot than normal surface. Lightweight  $\frac{3}{8}$ " thick aluminum withstands heavy traffic but lifts easily using handholds. The 11" apron with beveled edges and an 11° crown provide smooth, efficient entry and exit. Bottom includes a bolted safety stop to keep plate in position. Note that width should be 12" wider than load. Not for use with rider type trucks.

Model	W"	L"	Wt. lbs	Net Wt.
BN813624	36	24	3350	35
BN813636	36	36	2000	46
BN814824	48	24	3700	51
BN814836	48	36	2700	66
BN814848	48	48	2050	86
BN816048	60	48	2660	100

Height is the difference above or below deck



## Dock Board with Curbs

Speed up loading operations, help prevent accidents and reduce labor costs. Anti-skid diamond tread surface for maximum safety. High-visibility tapered curbs help prevent tire damage. Curb provides full length handgrip for ease and safety in handling. Beveled board ends offer smooth entry and exit. Safety stop on underside of board fits snugly between truck and dock so board will not move under load. An 11° angle supplied unless another Angle of operation is specified. 11" entry lip with beveled nose protects tires.



## Aluminum with Aluminum Curbs

Model	W" x L"	Wt. lbs	Model	W" x L"	Wt. lbs
<b>5,000 LB. CAPACITY</b>			<b>10,000 LB. CAPACITY</b>		
BN825436	54 x 36	65	BN836036	60 x 36	130
BN825442	54 x 42	91	BN836042	60 x 42	147
BN825448	54 x 48	103	BN836048	60 x 48	180
BN826036	60 x 36	74	BN837236	72 x 36	156
BN826042	60 x 42	98	BN837242	72 x 42	176
BN826048	60 x 48	114	BN837248	72 x 48	210
<b>7,000 LB. CAPACITY</b>			<b>14,000 LB. CAPACITY</b>		
BN875436	54 x 36	80	BN885436	54 x 36	162
BN875442	54 x 42	101	BN885442	54 x 42	186
BN875448	54 x 48	110	BN885448	54 x 48	202
BN876036	60 x 36	95	BN886036	60 x 36	187
BN876042	60 x 42	119	BN886042	60 x 42	191
BN876048	60 x 48	137	BN886048	60 x 48	237

## Aluminum with Steel Curbs

Model	W" x L"	Wt. lbs	Model	W" x L"	Wt. lbs
<b>10,000 LB. CAPACITY</b>			<b>15,000 LB. CAPACITY</b>		
BN846036	60 x 36	127	BN856036	60 x 36	154
BN846048	60 x 48	165	BN856048	60 x 48	201
BN847236	72 x 36	144	BN856036	72 x 36	177
BN847248	72 x 48	187	BN857248	72 x 48	230

## Steel with Steel Curbs

Model	W" x L"	Wt. lbs
<b>10,000 LB. CAPACITY</b>		
BN866036	60 x 36	251
BN866048	60 x 48	333
BN866036	72 x 36	292
BN867248	72 x 48	388

## Choose From Three Types:

<b>Steel with Steel Curbs</b>	Heavy duty all welded steel. Ideal for frequent motorized traffic. Maximum impact resistance, strength and safety. 10,000 lb. models have built-in lifting loops standard for easy mobility with a fork truck. Chip resistant <b>Gray</b> and <b>Blue</b> painted finish.
<b>Aluminum with Steel Curbs</b>	Combines the strength of steel with lightweight aluminum. Steel bolt-on curbs offer excellent impact resistance to help prevent run-off. Resilient aluminum alloy dock board has positive traction surface. Chip resistant <b>Gray</b> and <b>Blue</b> painted finish.
<b>Aluminum with Aluminum Curbs</b>	Lightweight boards offer excellent portability and resist corrosion. High strength aluminum board has full-length welded aluminum curbs for extra rigidity and help to prevent operator run-off. Curbs are painted in high-visibility safety <b>Yellow</b> .

**Bryn**nick  
Enterprises Limited

**Br nick Enterprises Limited**

7F, 1035 Guangxian Road, Hi-Tech Zone, Ningbo China 315040

+86-574-87324016 Fax: +86-574-87324400

Email: sales@br nick.com

www.br nick.com